

ASSEMBLY INSTRUCTIONS

TELREX ANTENNA

MODEL

SERIAL NO.

PUR. DATE

ANTENNAS
SINCE
1921

Communication and TV Antennas
telrex LABORATORIES

ASBURY PARK NEW JERSEY, U.S.A.

1/4" MATCH STIPES

DRIVEN DIPOLE

INSULATOR

"BALUN"

TAPE OR TIE
"BALUN" TO
BOOM

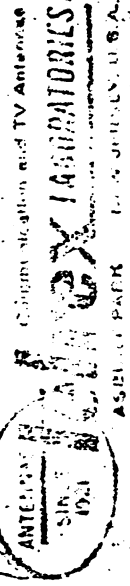
TRANSMISSION
LINE

SCHEMATIC

TRANSFORMER

COAXIAL 1/2" "BALUN"

"BALUN" & TRANS. LINE
ASSY. AND CONNECTIONS

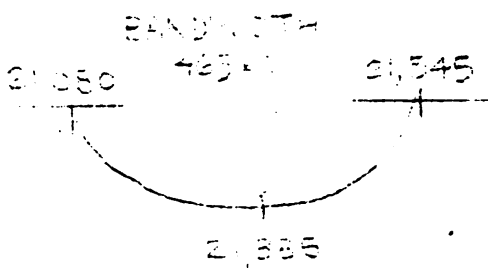
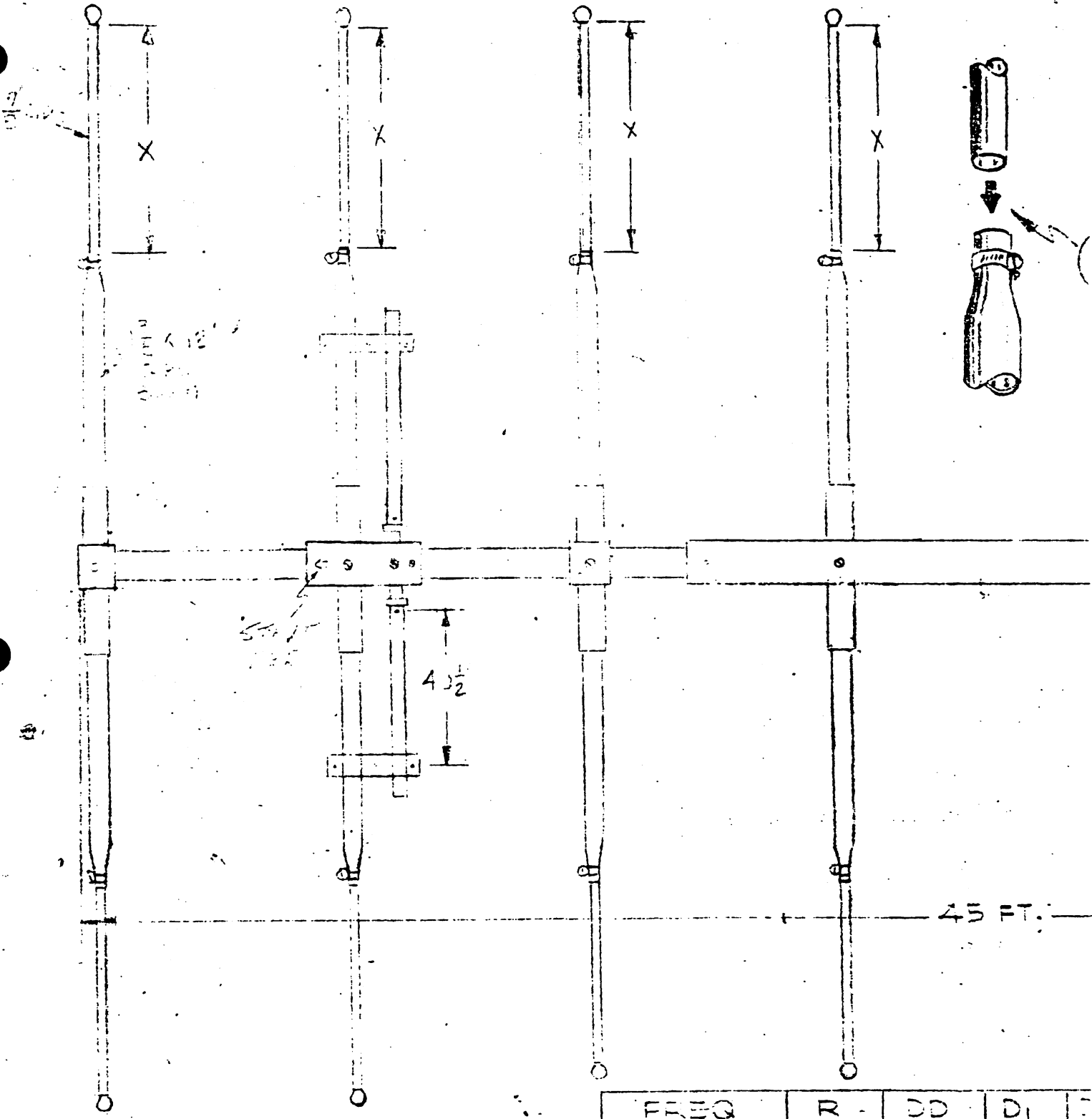


REF.

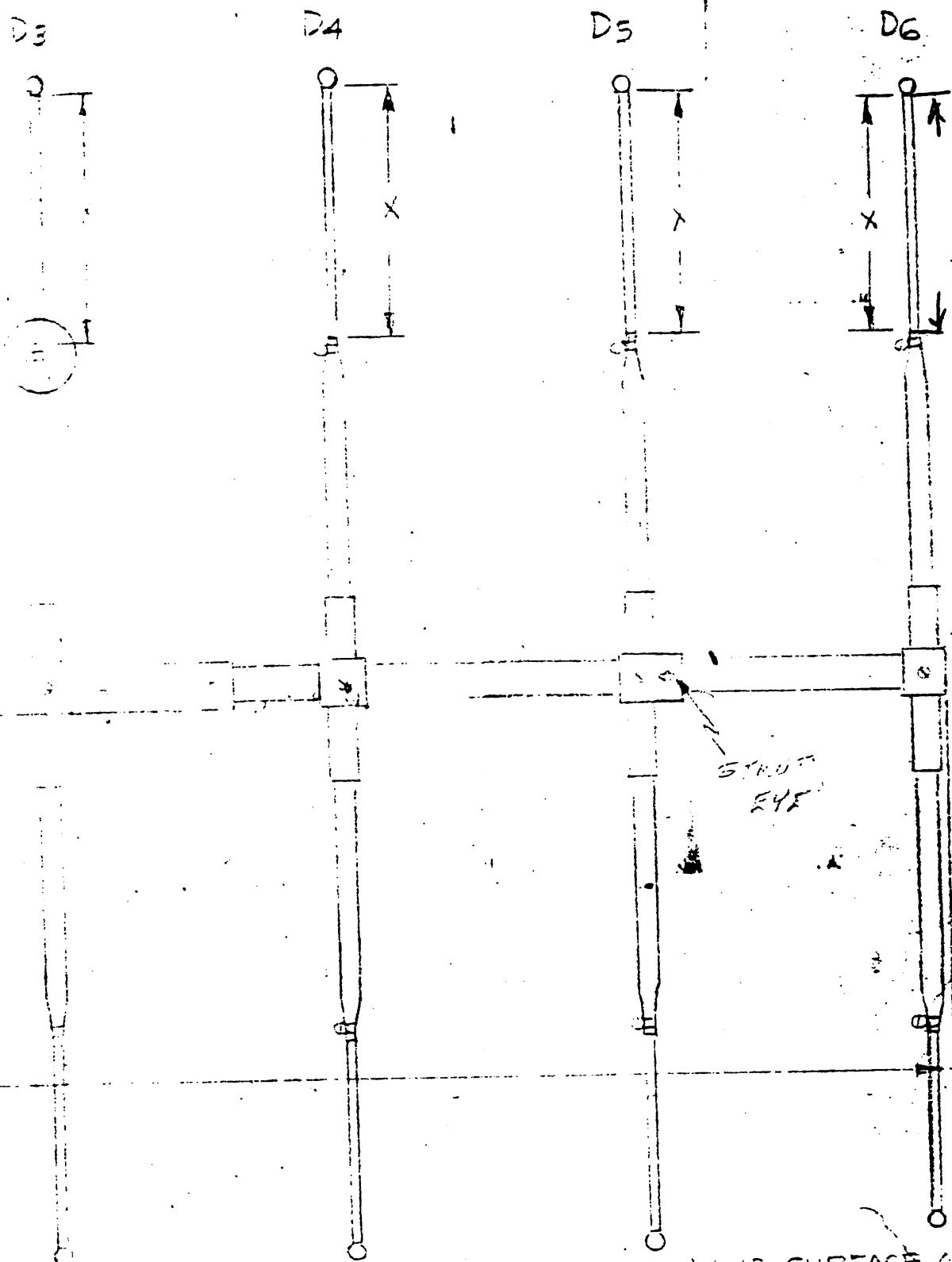
D.C.

D1

D2



FREQ	R	DD	D1	F
21,050	79 ³ / ₈	66 ³ / ₄	61 ³ / ₈	5
21,100	79	66 ³ / ₈	61	5
21,200	78 ³ / ₈	65 ³ / ₄	60 ³ / ₈	5
21,300	77 ³ / ₈	65	59 ⁵ / ₈	5
21,385	77	64 ³ / ₈	59	5
21,400	76 ⁷ / ₈	64 ¹ / ₄	58 ⁷ / ₈	5
21,450	76 ¹ / ₂	63 ⁷ / ₈	58 ¹ / ₂	5



note

F/B RATIO - 30 D
 BEAMWIDTH - 41

NET WEIGHT - 249

WIND SURFACE AREA - 15.73 SQ. FT.
 WIND LOAD AT 100 MPH - 476 LBS
 15 METER 8 ELEMENT
 MODEL 15ME-5X

ser# 3625

15 1/2	15 1/2	51 1/2	51 1/2	52 1/2
15 1/2	15 1/2	51	51	52 1/2
15 1/2	15 1/2	50 1/2	50 1/2	51 1/2
15 1/2	15 1/2	49 3/4	49 3/4	51 1/2
15 1/2	15 1/2	49 3/4	49	50 1/2
15 1/2	15 1/2	48 3/4	48 3/4	50 1/2
15 1/2	15 1/2	48 3/4	48 3/4	50

ANTENNAS SINCE 1931

telrex LABORATORIES

COMMUNICATIONS AND TV ANTENNAS

ROCKAWAY PARK NEW JERSEY, U.S.A.

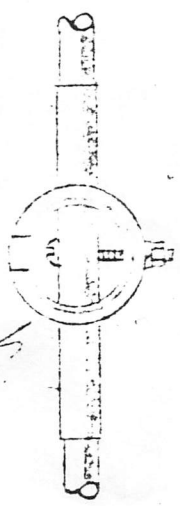
4 4 5 5

1963

D6



note



F/B RATIO - 30 DB
BEAMWIDTH - 41°

NET WEIGHT 0.149 LB

SURFACE AREA - 13.73 SQ IN

LOAD AT 100 MPa - 476 LBS

ENTER ELEMENT

ELEMENT 45X Ser# 36252

COMMUNICATIONS AND TV APPLIANCE
RELEX LABORATORIES
 NEW JERSEY, U.S.A.
 400 10th St
 CT 07030

