

# Antenna Pictures & Some Other Stuff

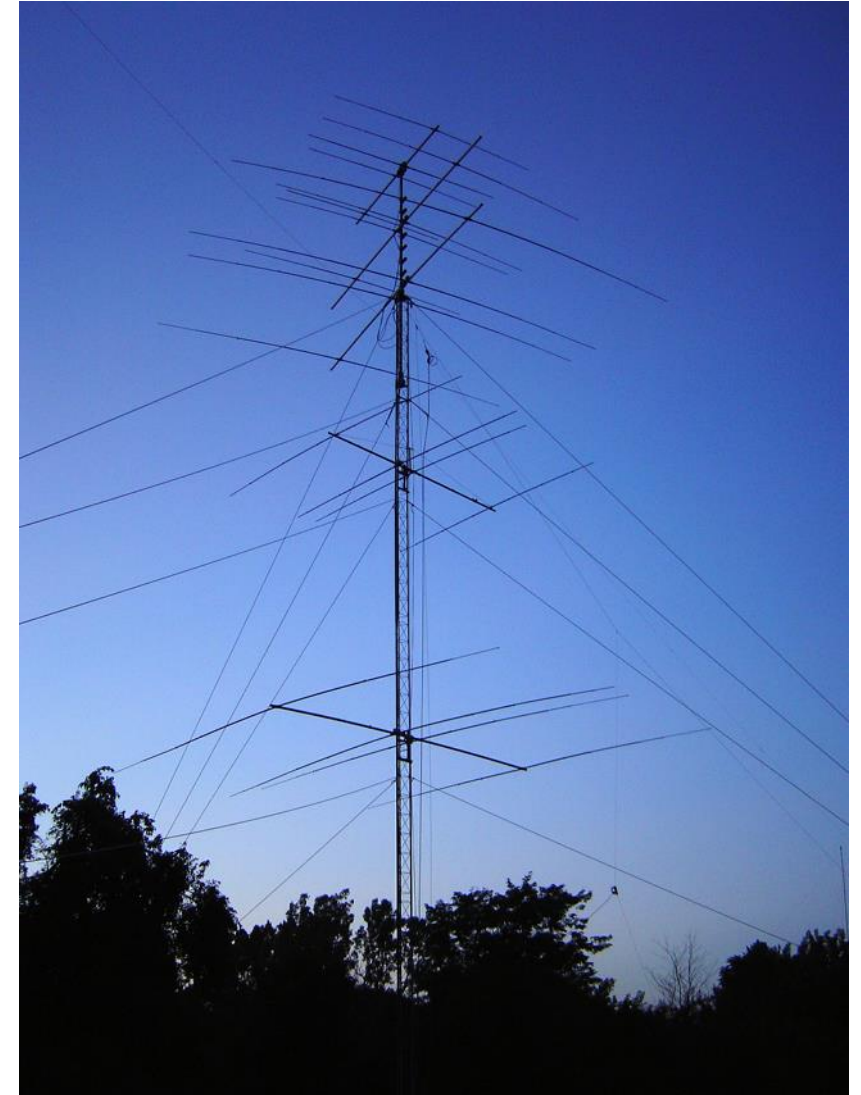
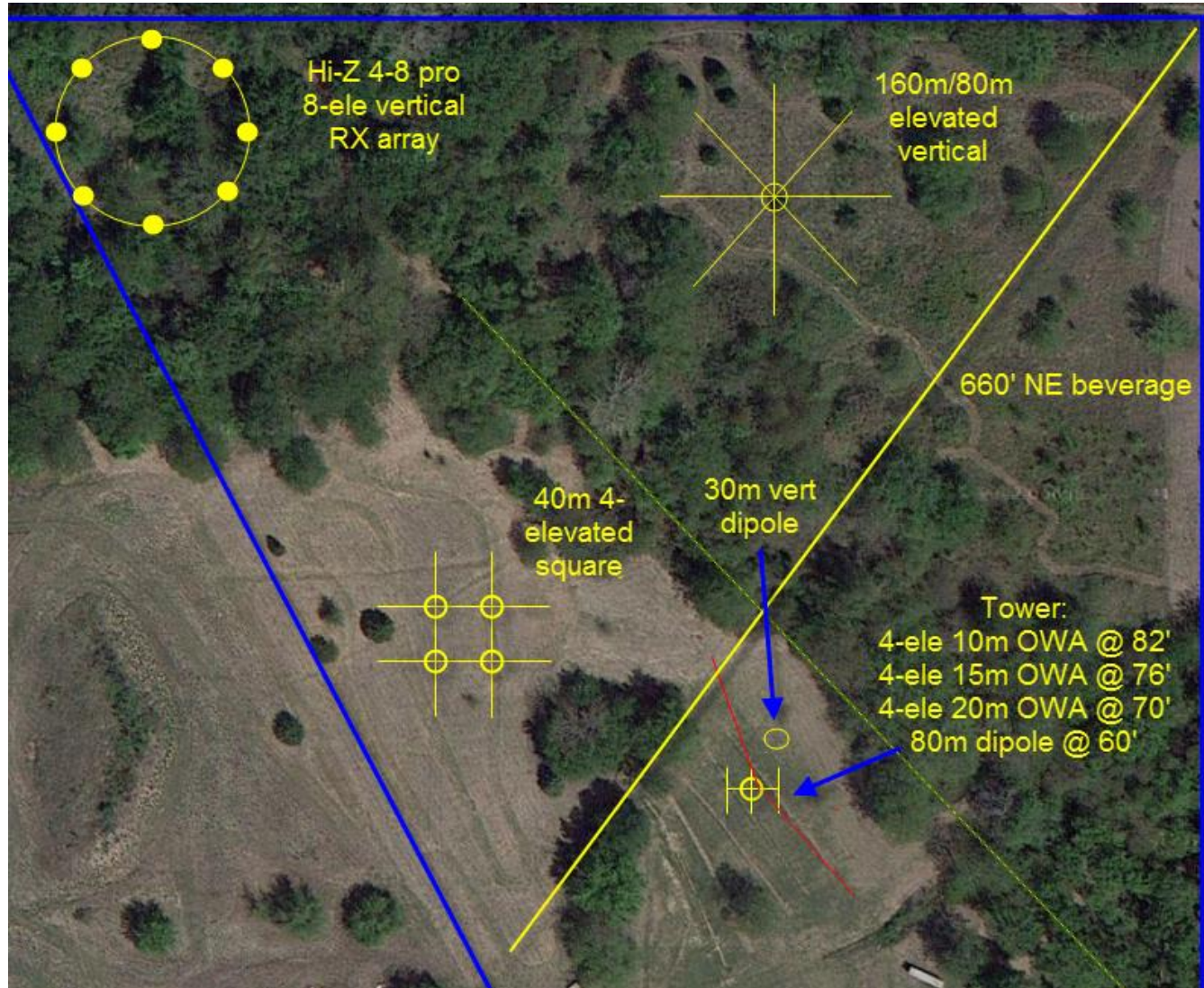
ACØC – JAN 2019 - KCDXC



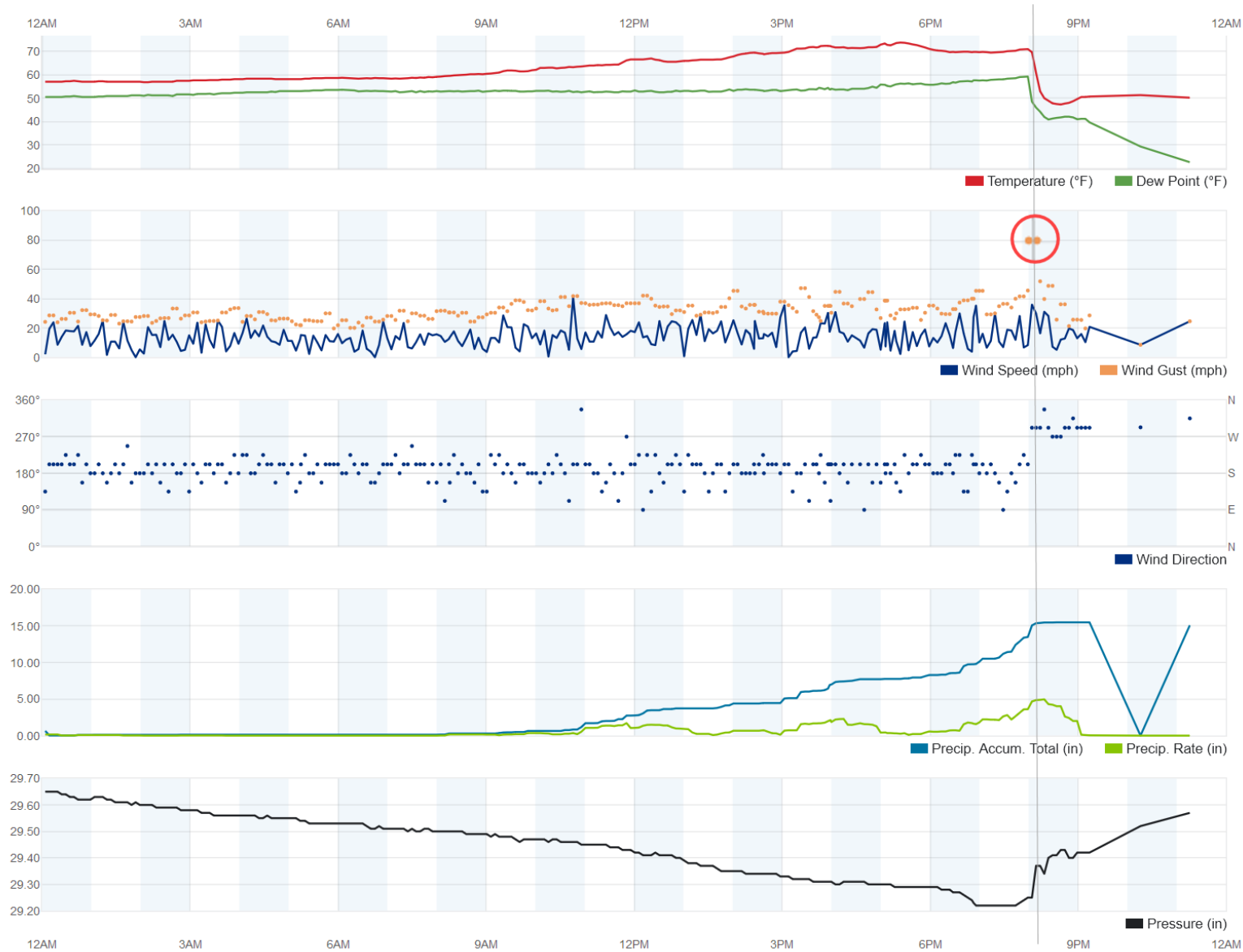




# 2012-2017 – The “Temporary” Tower



Weather History Graph  
March 6, 2017



Happy - Until  
The Big Wind  
Came to  
Town

Weather History for Louisburg, KS [KKSLOUIS8]

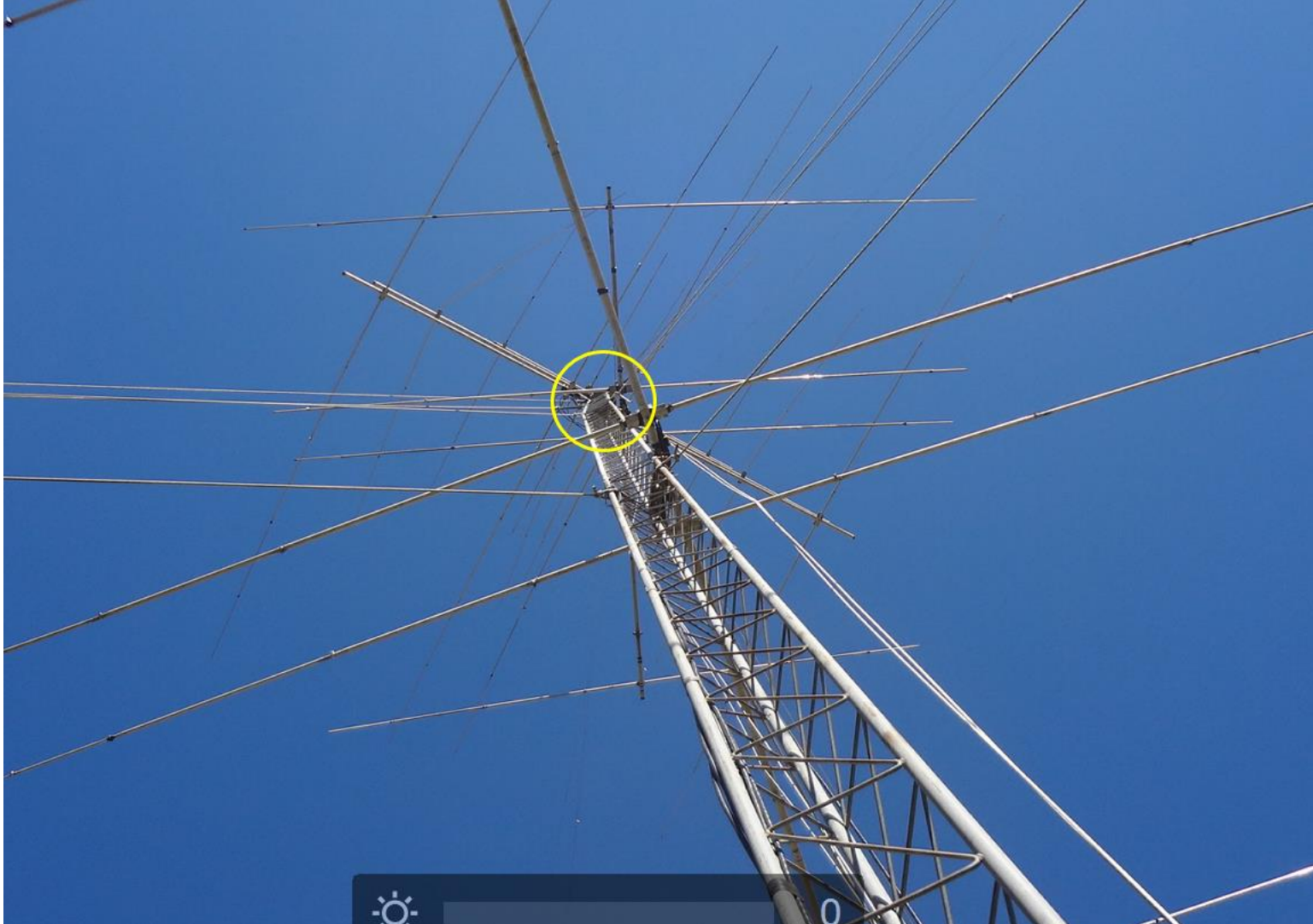
[Previous](#) Daily Mode March 6 2017

**Summary**  
**March 6, 2017**

	High	Low	Average		High	Low	Average
Temperature	73.8 °F	47.3 °F	60.5 °F	Wind Speed	80 mph	--	14 mph
Dew Point	59.2 °F	37.2 °F	52.7 °F	Wind Gust	80 mph	--	--
Humidity	83%	47%	70%	Wind Direction	--	--	SSW
Precipitation	15.48 in	--	--	Pressure	29.65 in	29.21 in	--



# March 2017 – The Big Wind



# March 2017 – The Big Wind



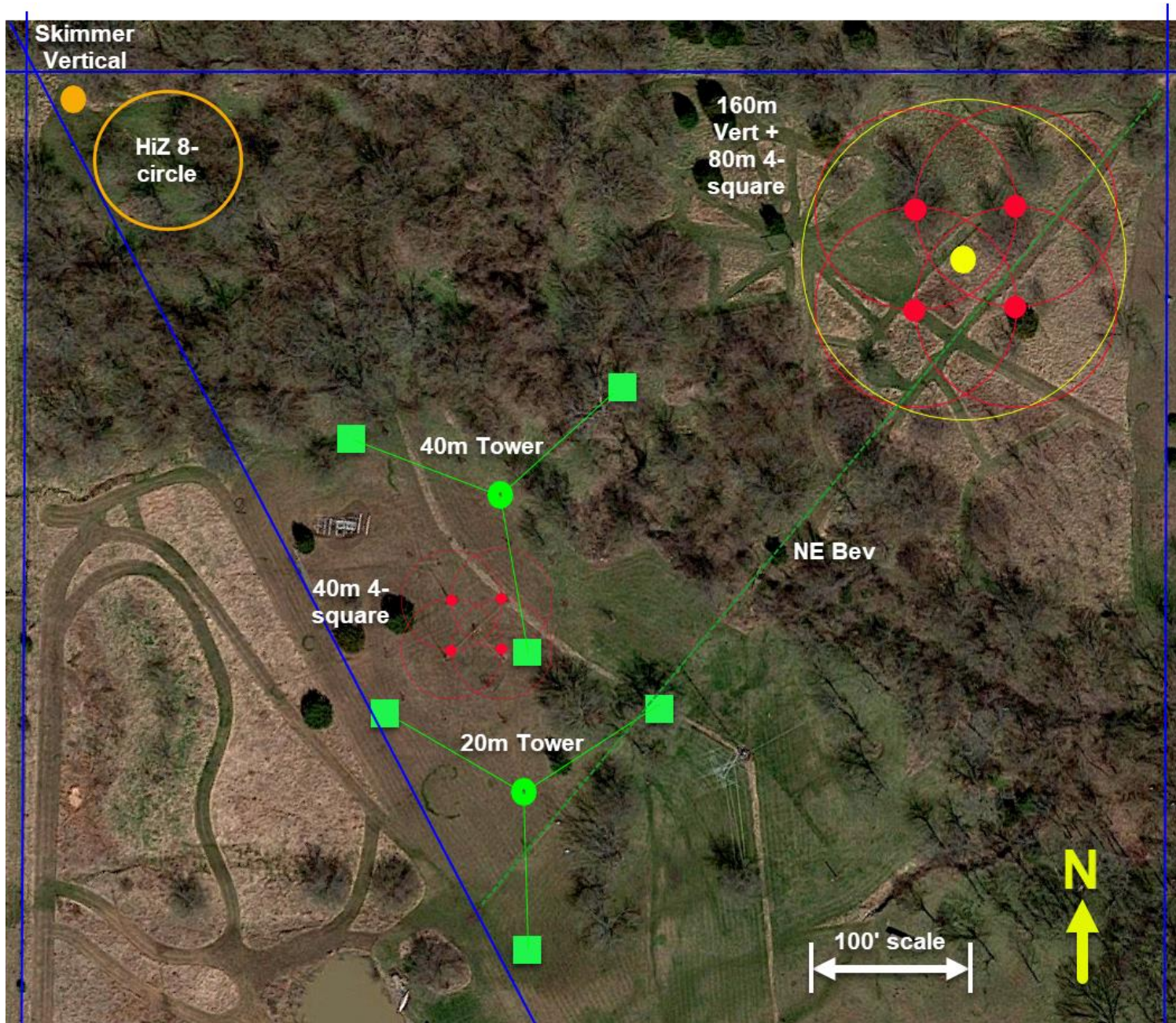
# Agenda

## ▶ **Site Overview**

- ▶ Antennas by band
- ▶ Grounding



SITE



## 4 Towers

- 160m: 160/80-4sq
- 40m: 40/30/17/10
- 20m: 80d/20/15/6
- House: 12/2/440

## 21 Antennas

- 18 RX/TX
- 3 RX-only





40m Tower – 126'

20m Tower – 110'



## 4 Towers

- 160m: 160/80-4sq
- 40m: 40/30/17/10
- 20m: 80d/20/15/6
- House: 12/2/440

## 160m Tower – 130'- View to NE





# Agenda

- ▶ Site Overview
- ▶ **Antennas by band**
- ▶ Grounding

130' 25G full size vertical  
~72 in-ground radials



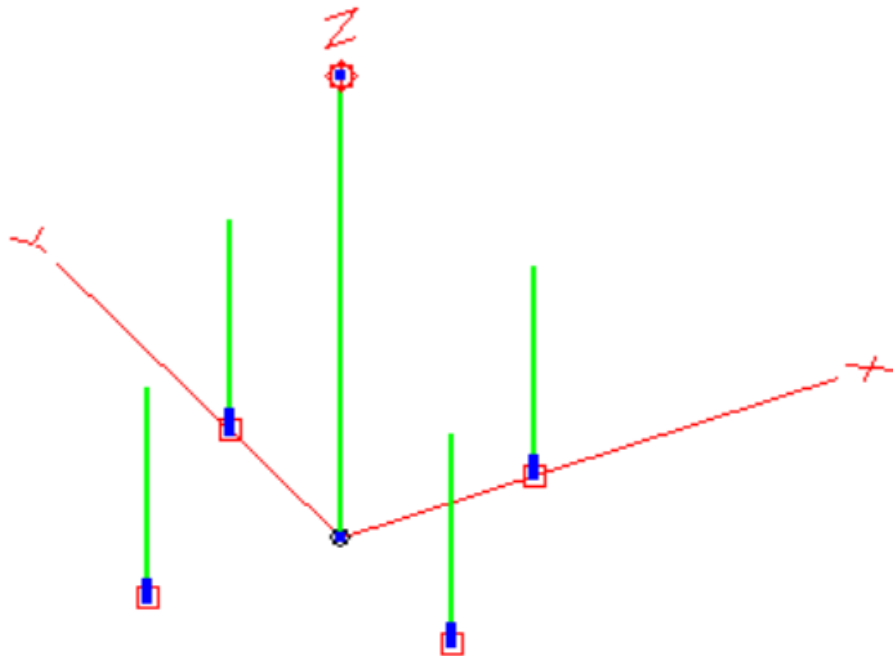
160m





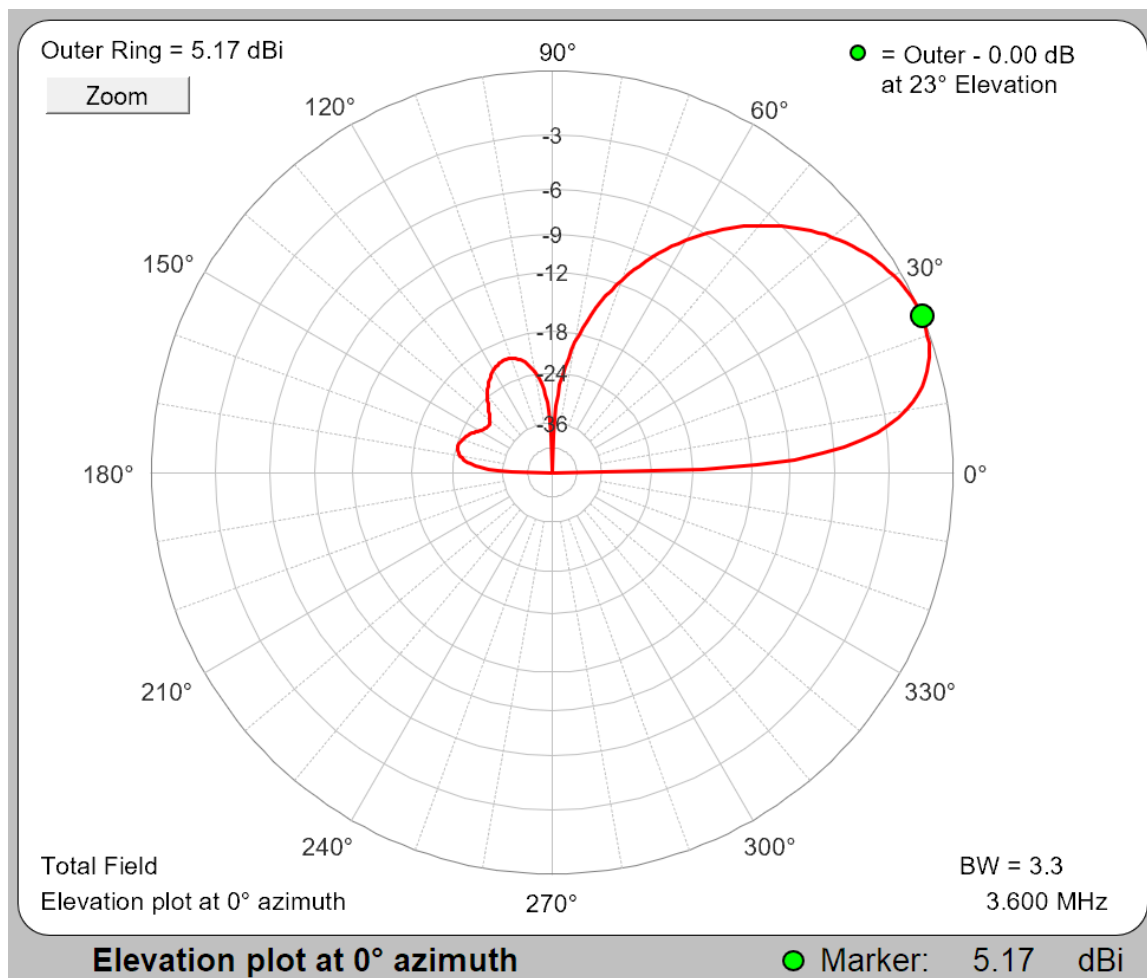
80m

EZNEC Pro/4

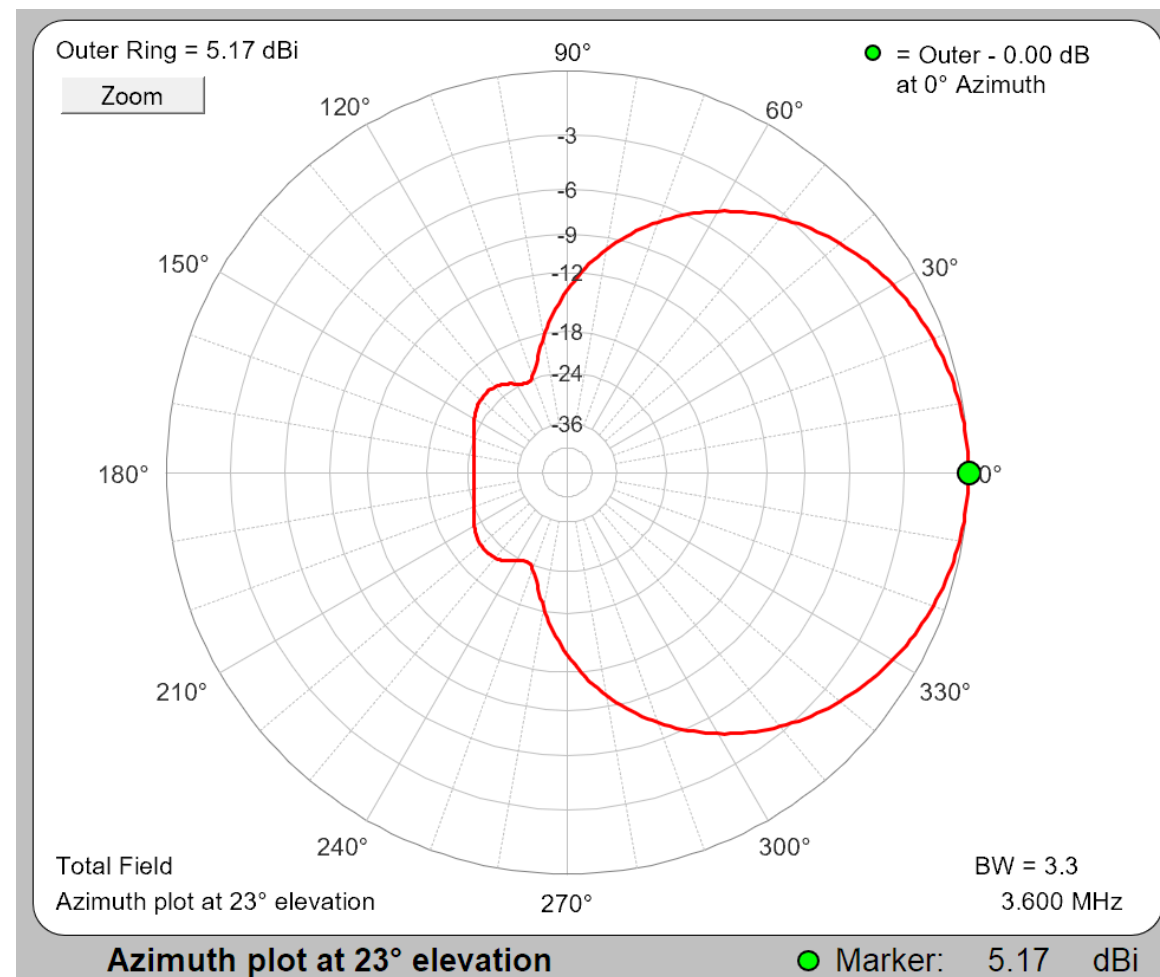


DXE 4-square  
Suspended from ropes off tower  
~50 radials per vertical

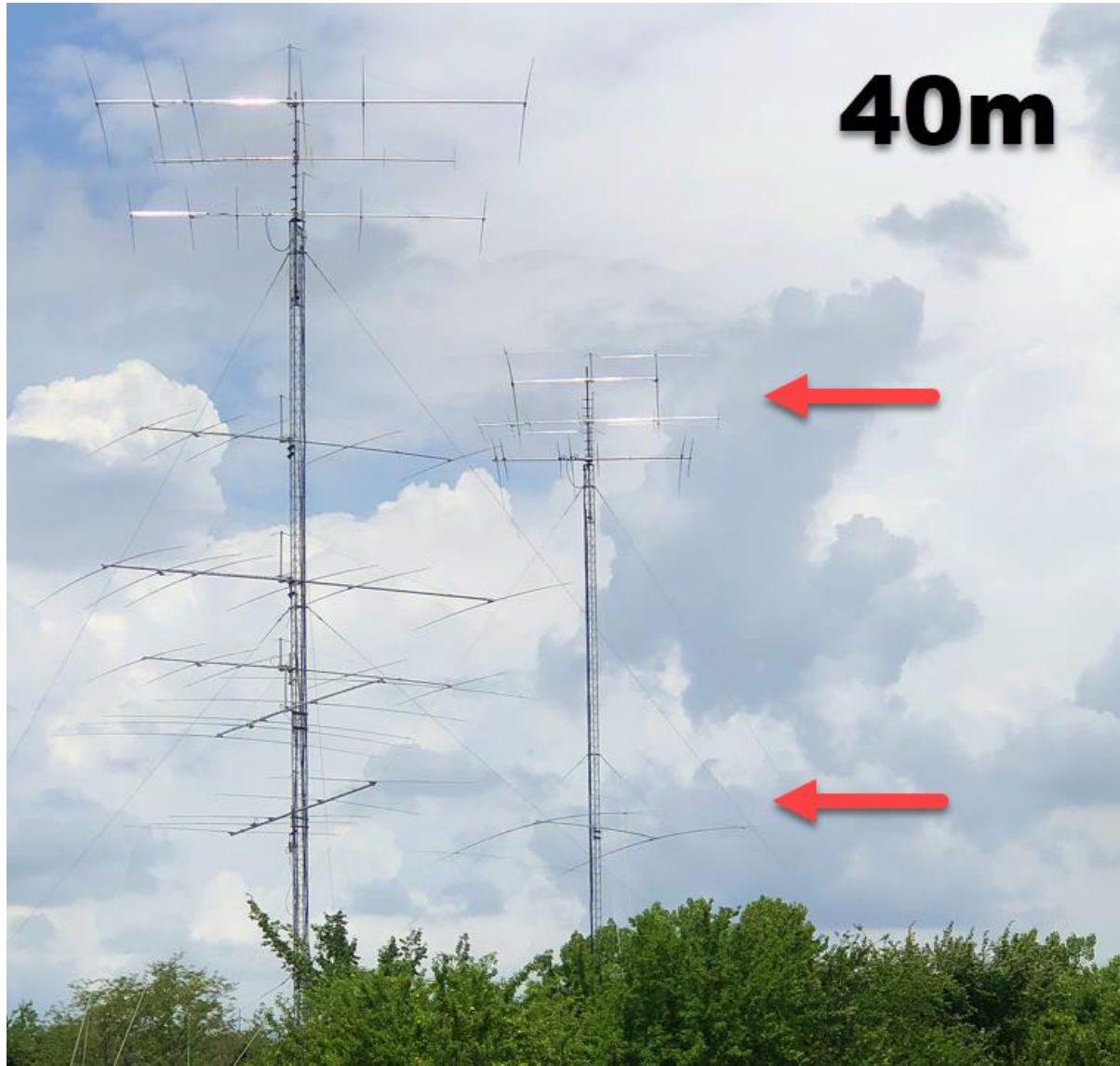
80m



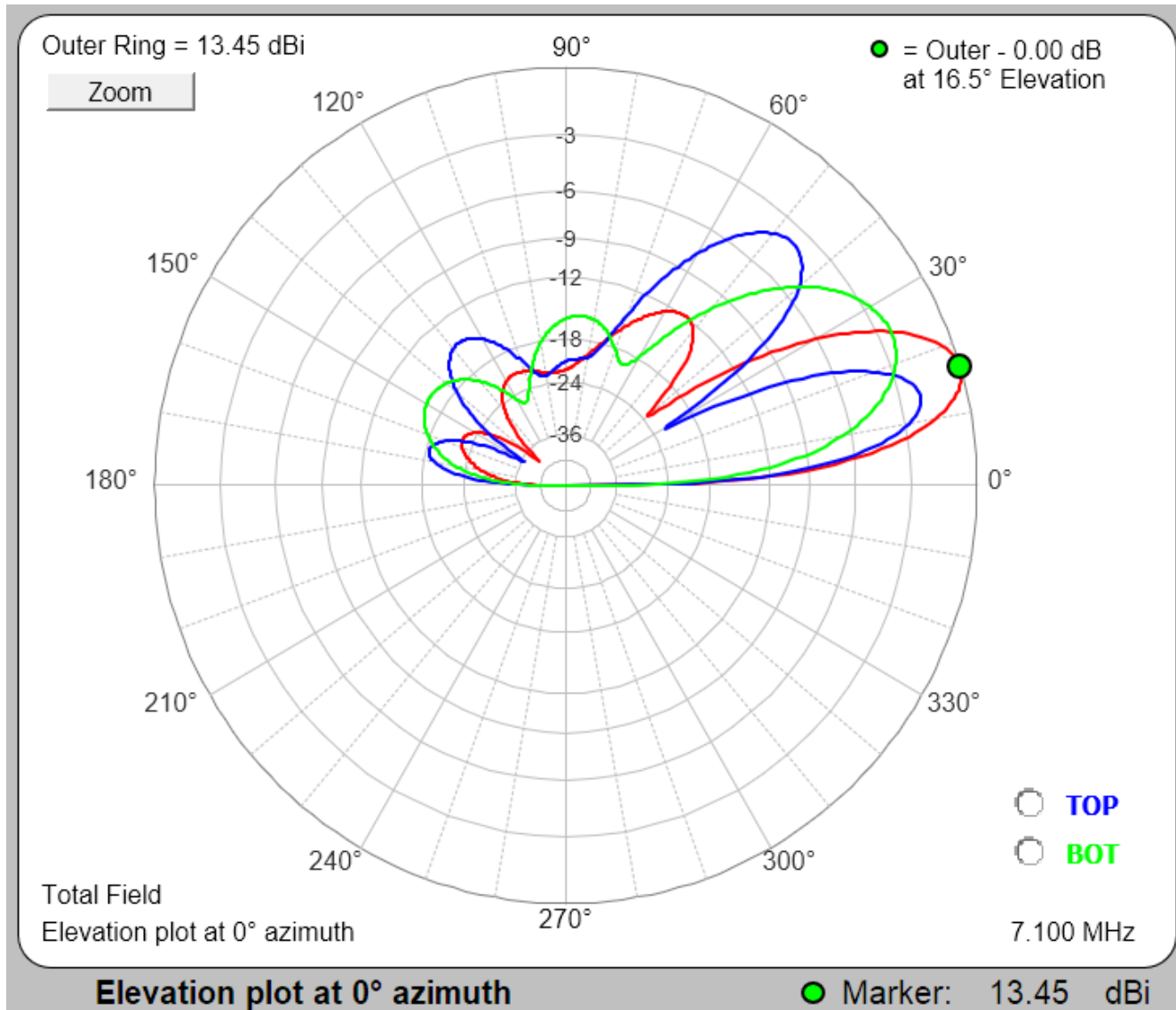
80m 4-sq







JK402T 2-ele "T" cap loaded  
Top-rotating & fixed EU



## Stack Magic

- More peak gain
- Fatter main lobe
- Smaller secondary lobes
- Tighter backside



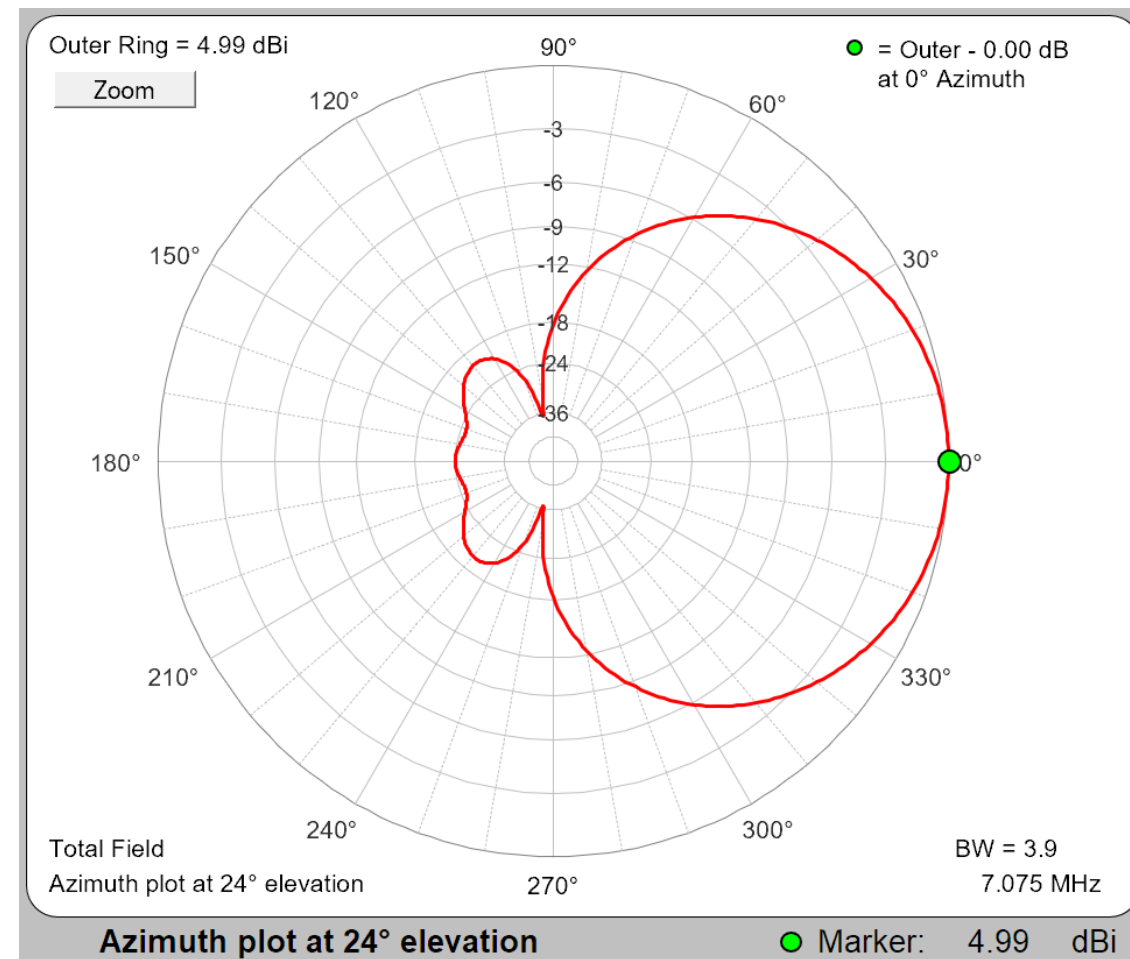
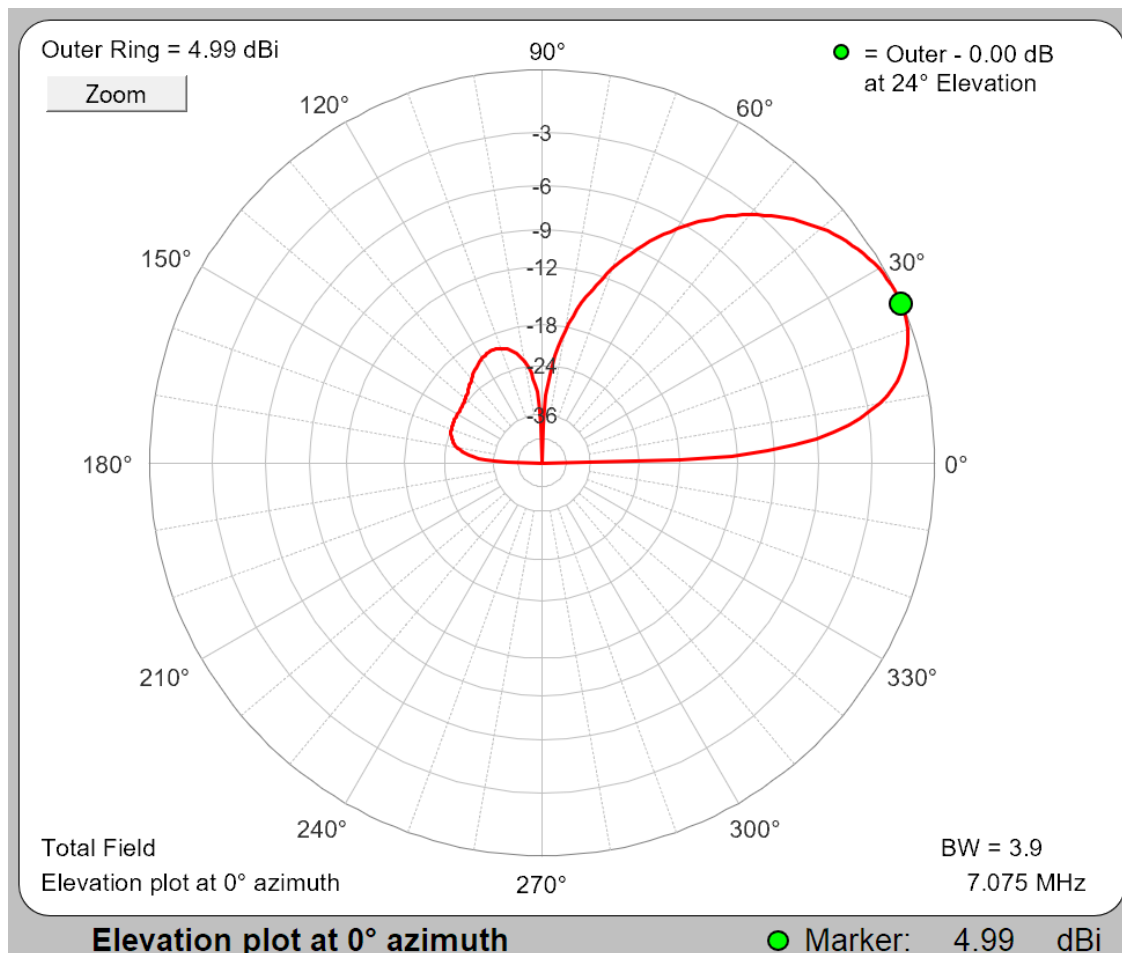


DXE 40m 4-square  
~50 radials per vert

40m

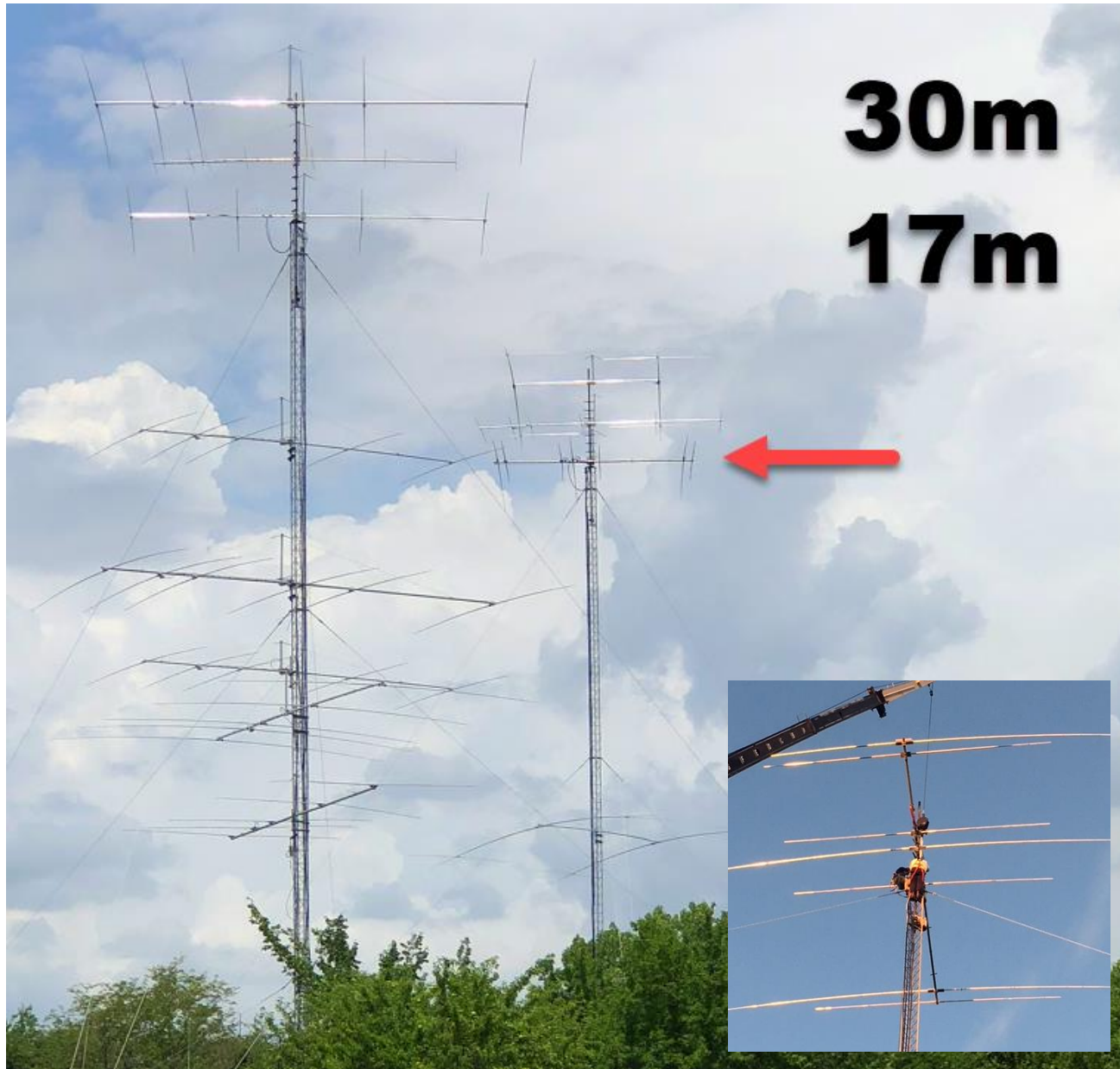


40m



40m 4-sq



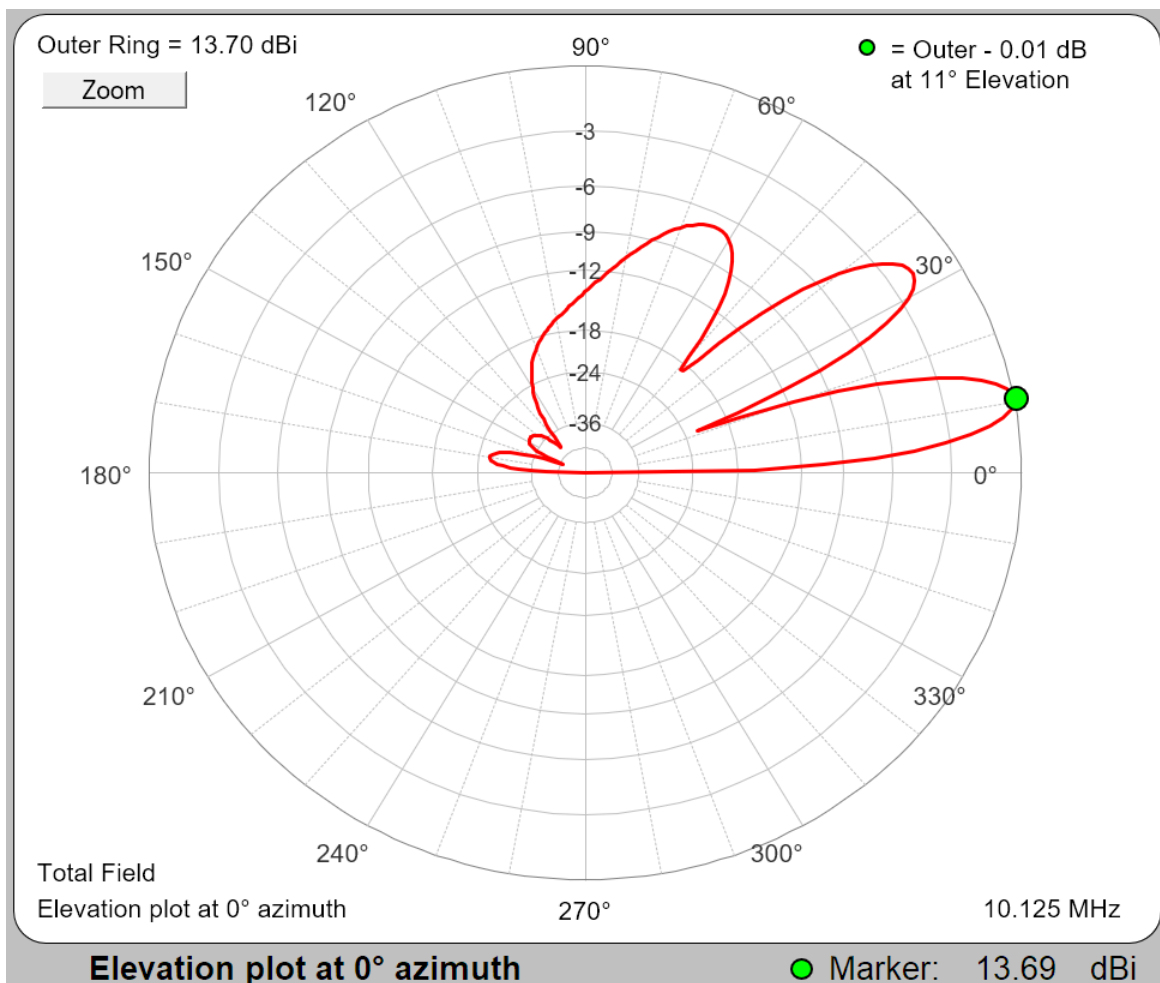


Homebrew Telrex + DXE  
30m: 3-ele full size  
17m: 4-ele

30m  
17m

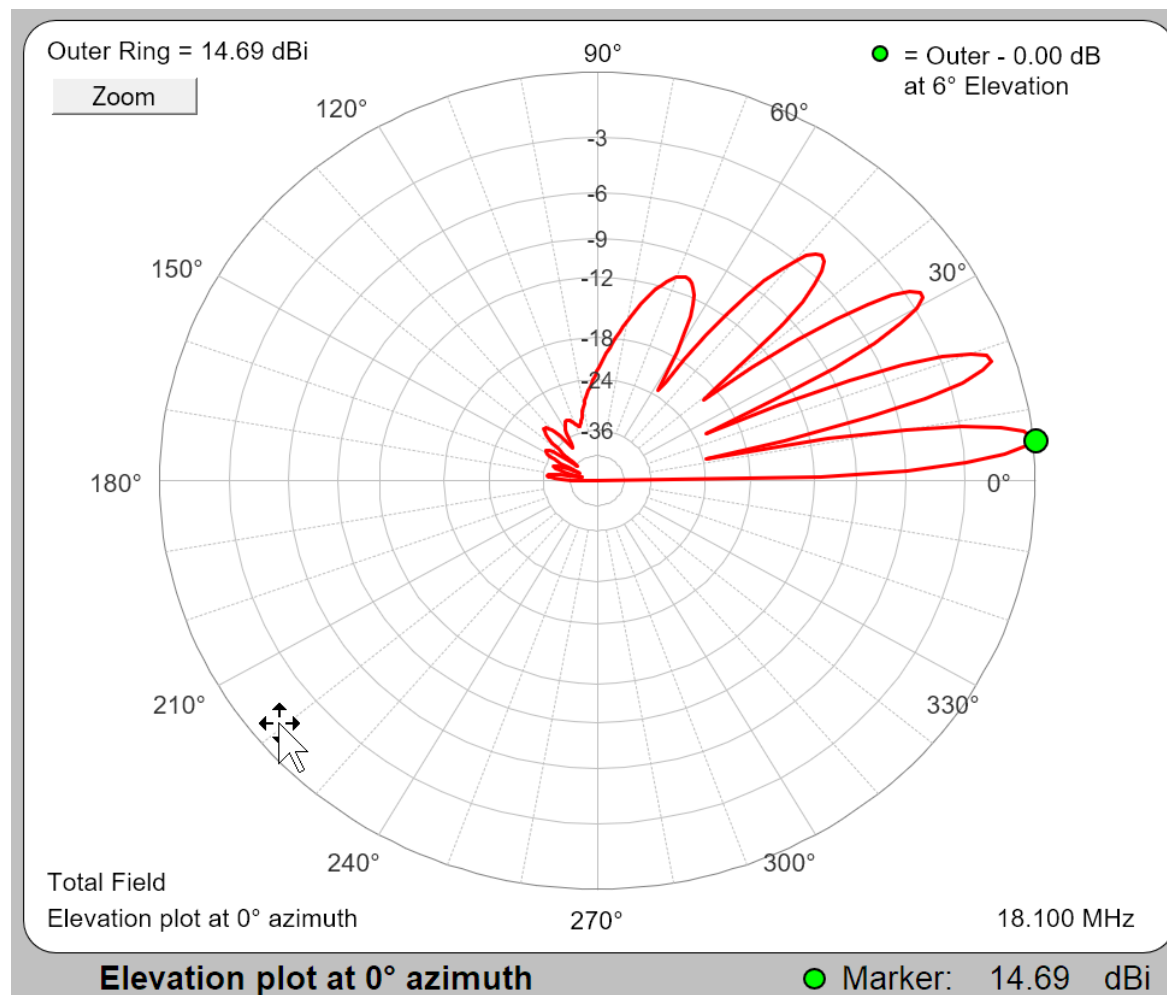


30m  
17m

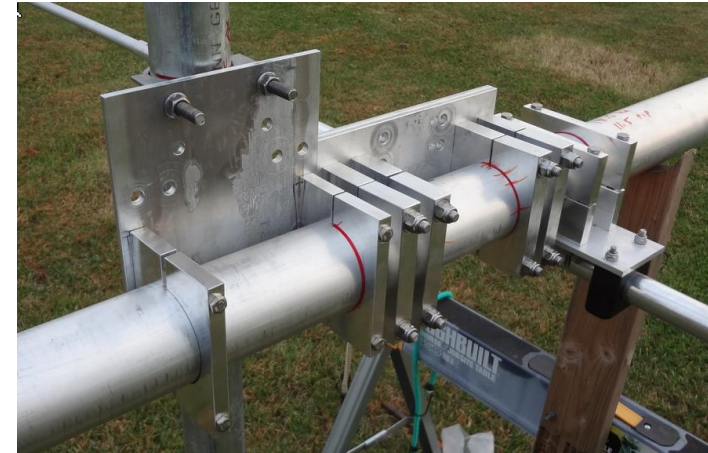
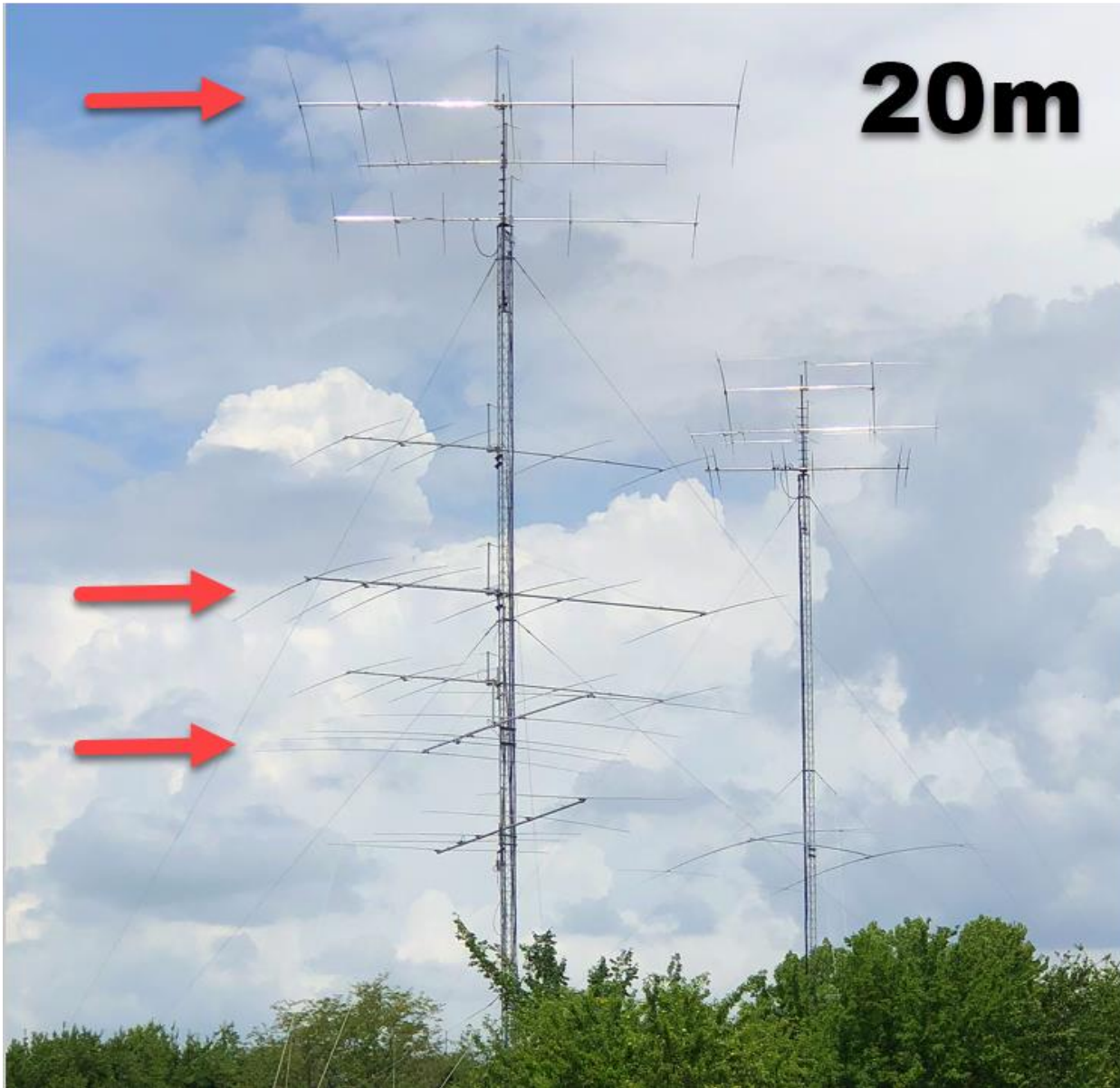


30m

17m







20m

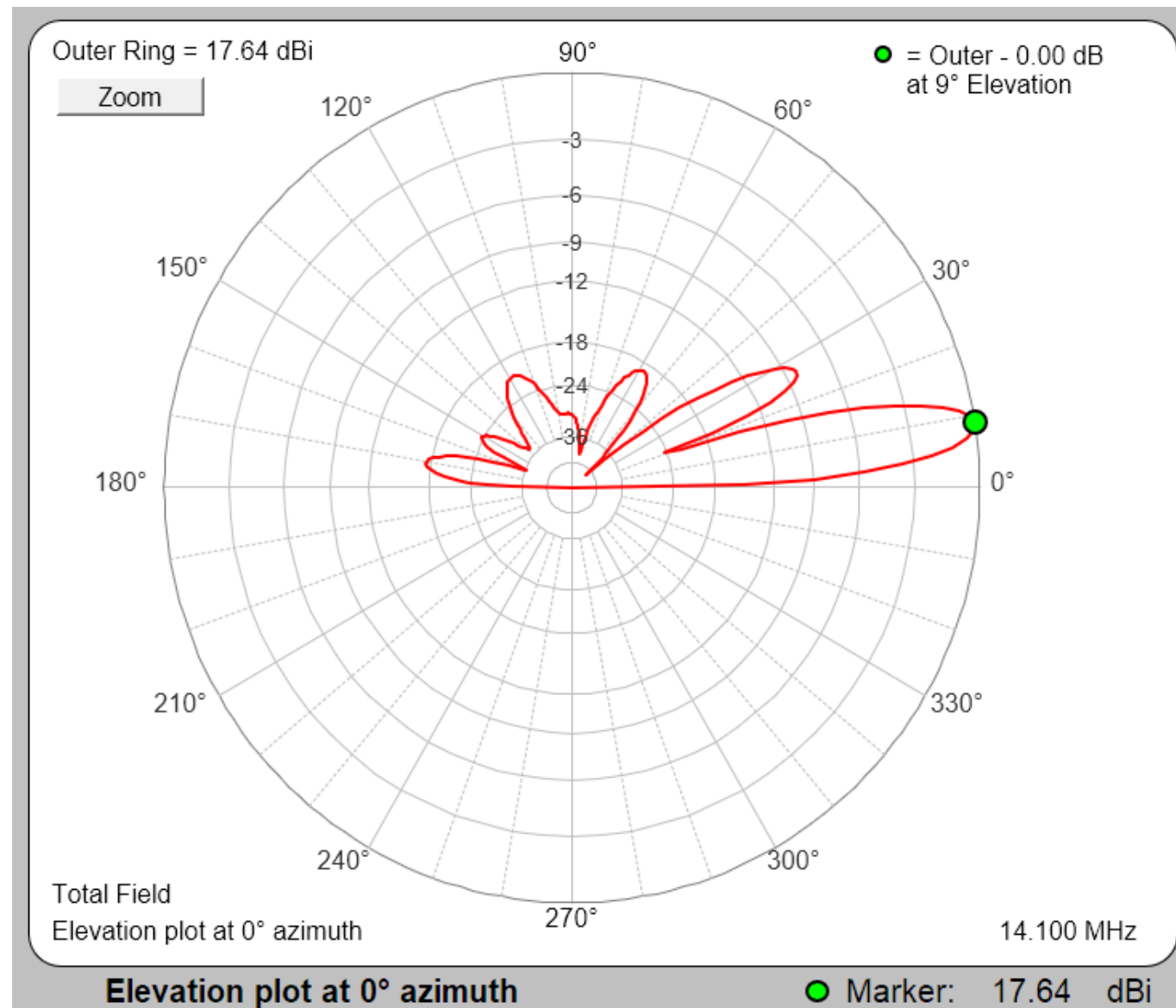


JK206 6-ele 44' boom

- Top-rotating
- 1x-fixed EU

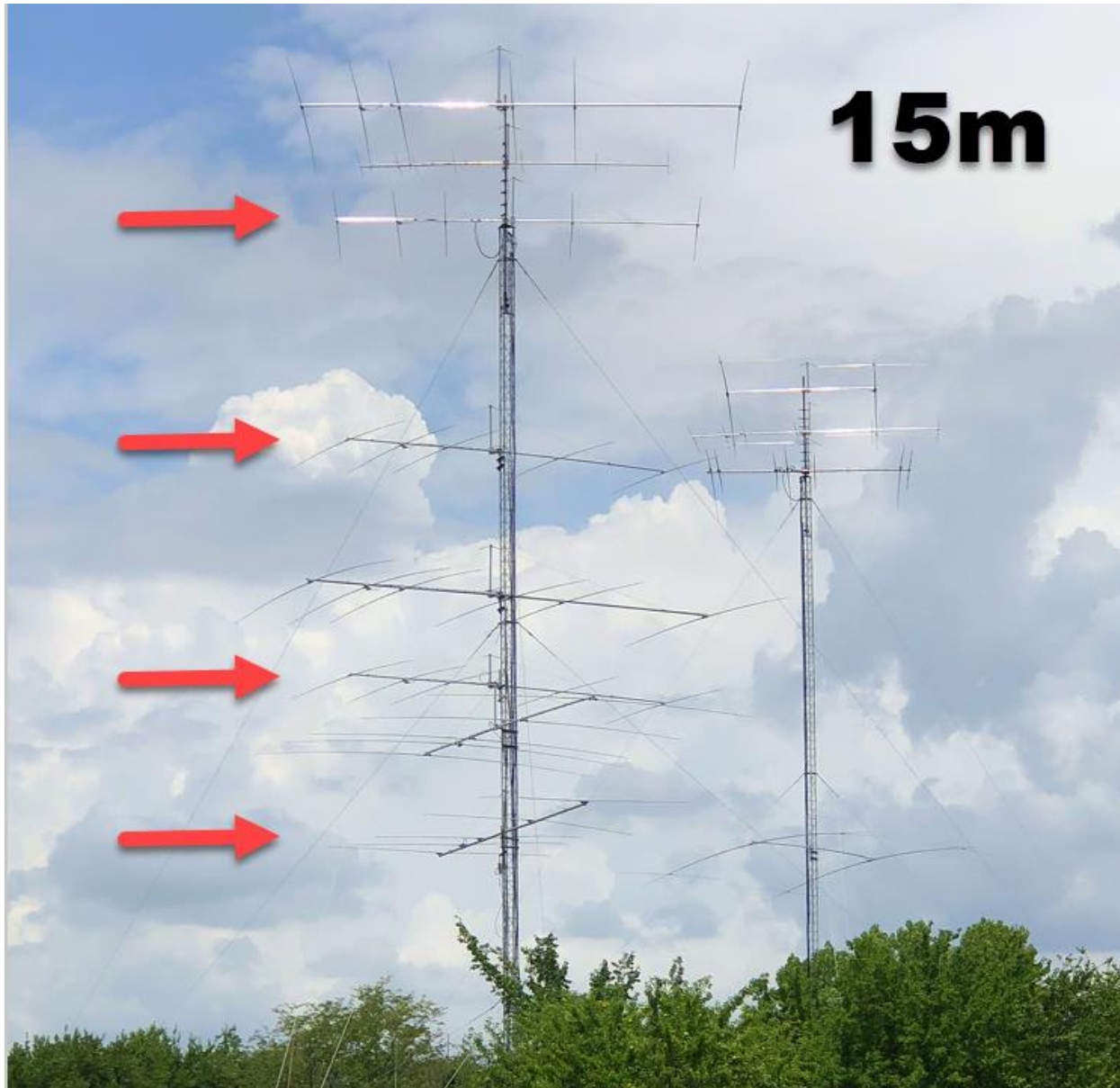
JK205 5-ele 39' boom – fixed SA

# 20m Stack Fixed EU

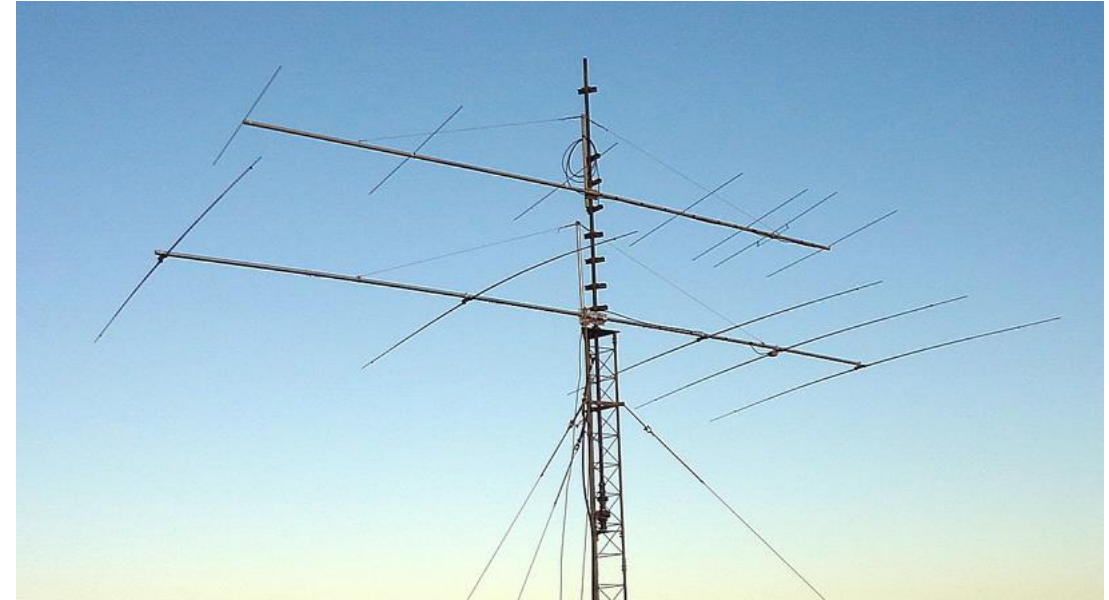


20m





15m



JK155 5-ele 36' boom

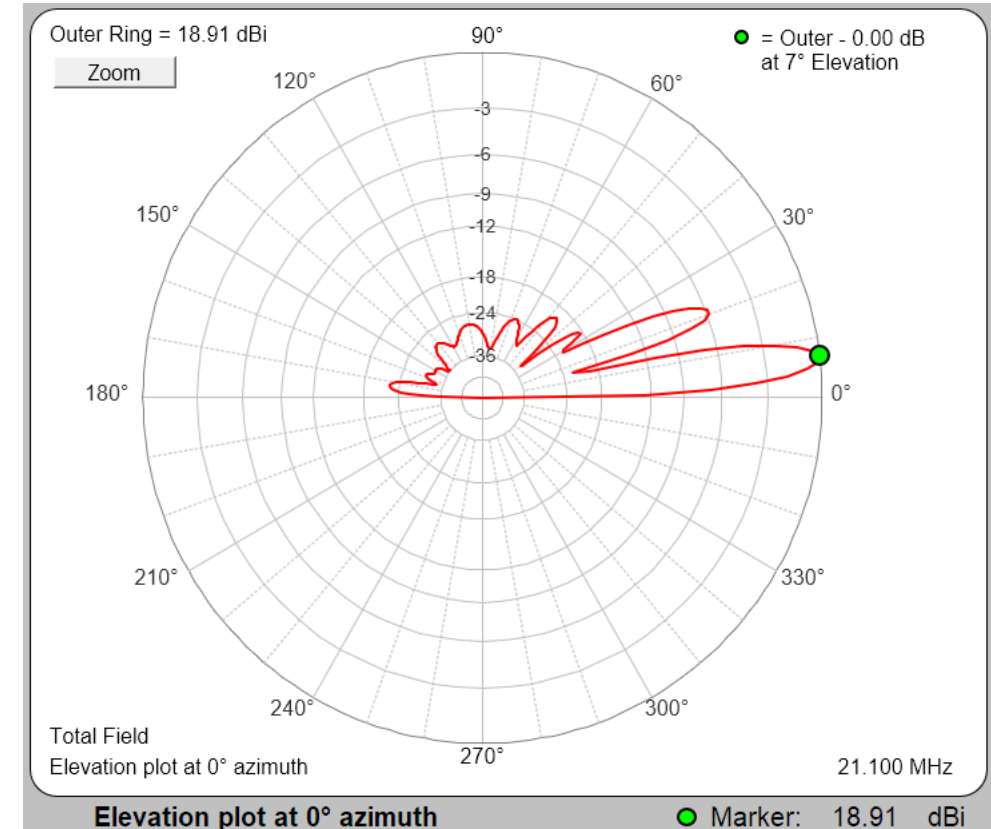
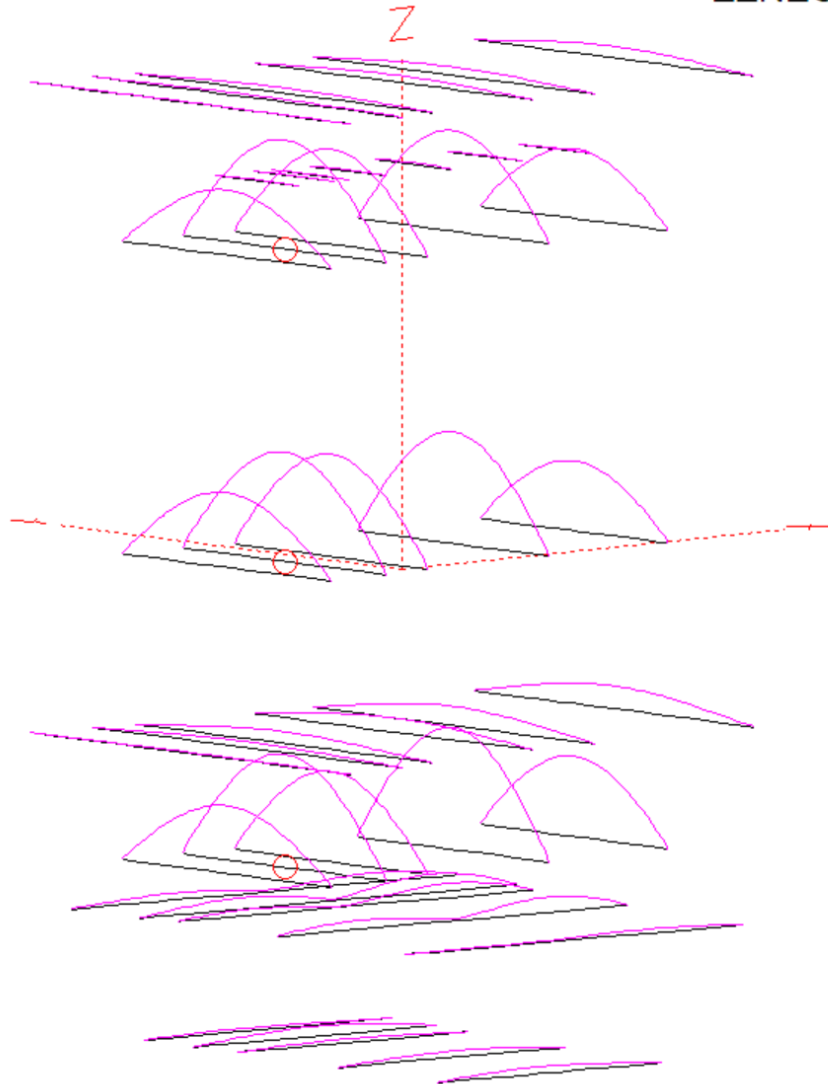
- Top - rotating
- 2x - fixed EU
- 1x - fixed SA

# Modeling Tasks

- Interaction
- Stack spacing optimization

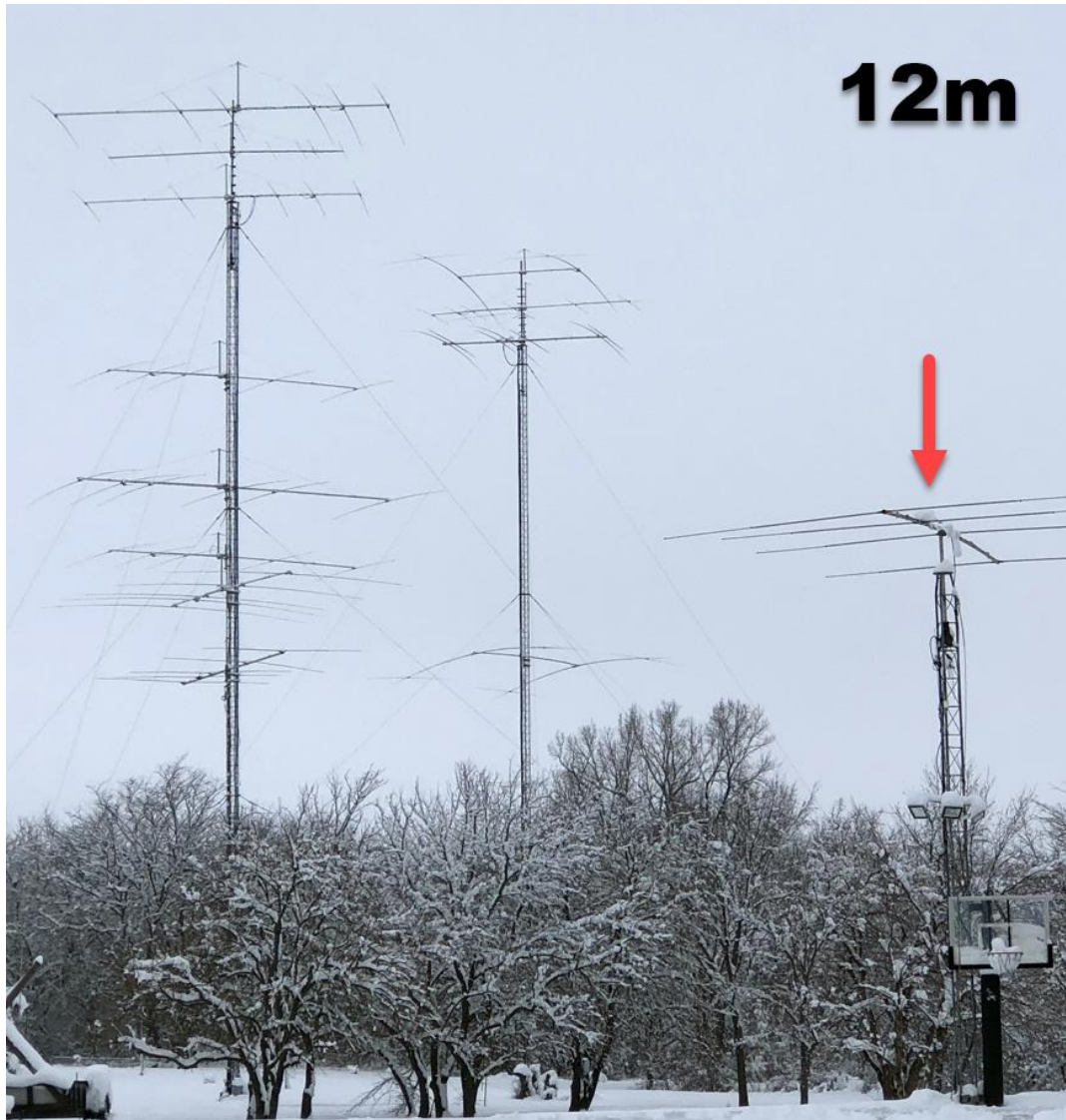
15m

EZNEC Pro/4



15m Stack  
Fixed EU





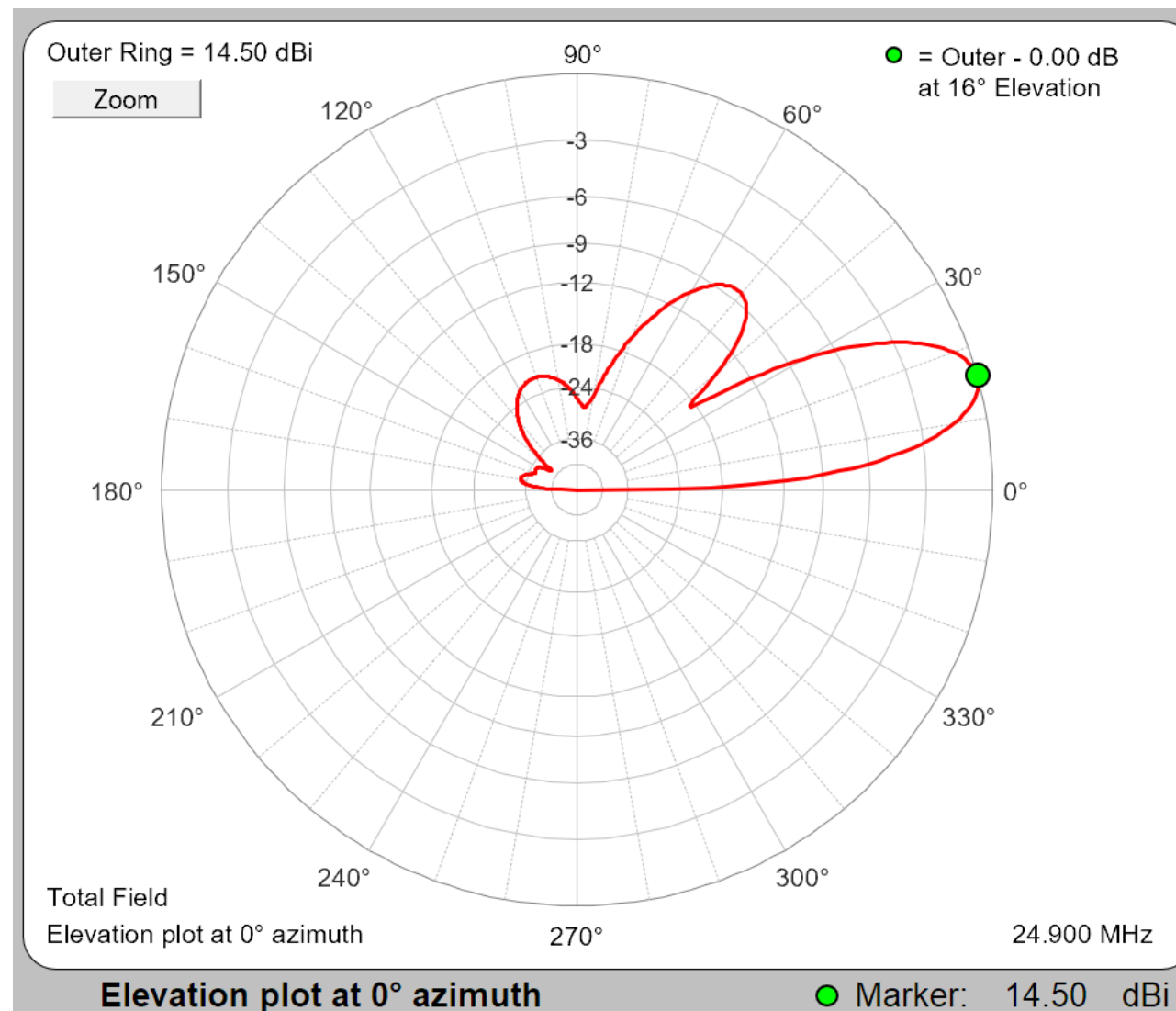
12m



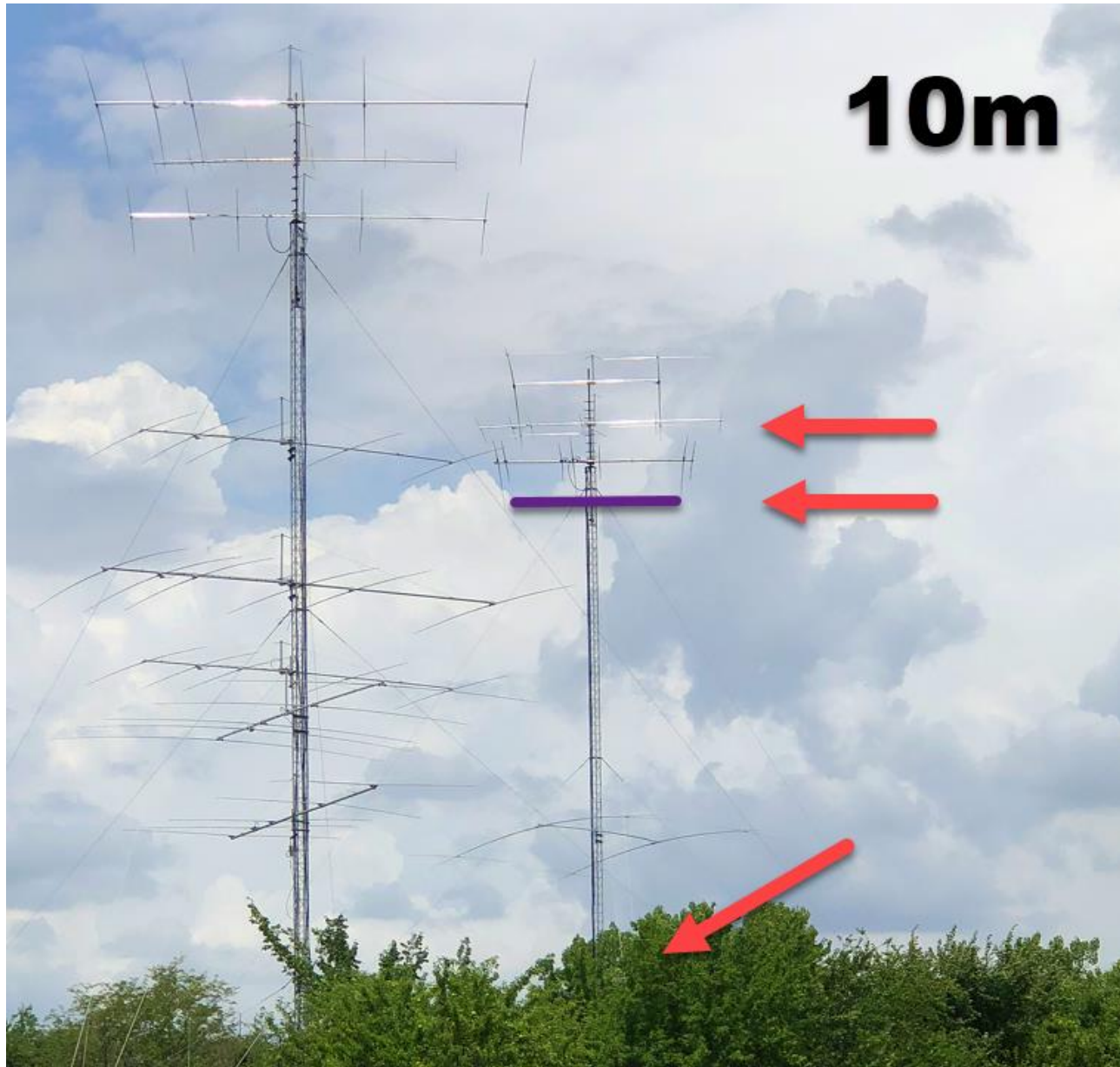
Homebrew – Hygain LJ  
35'- 4-ele on 26' boom

12m

# 12m Yagi







**10m**



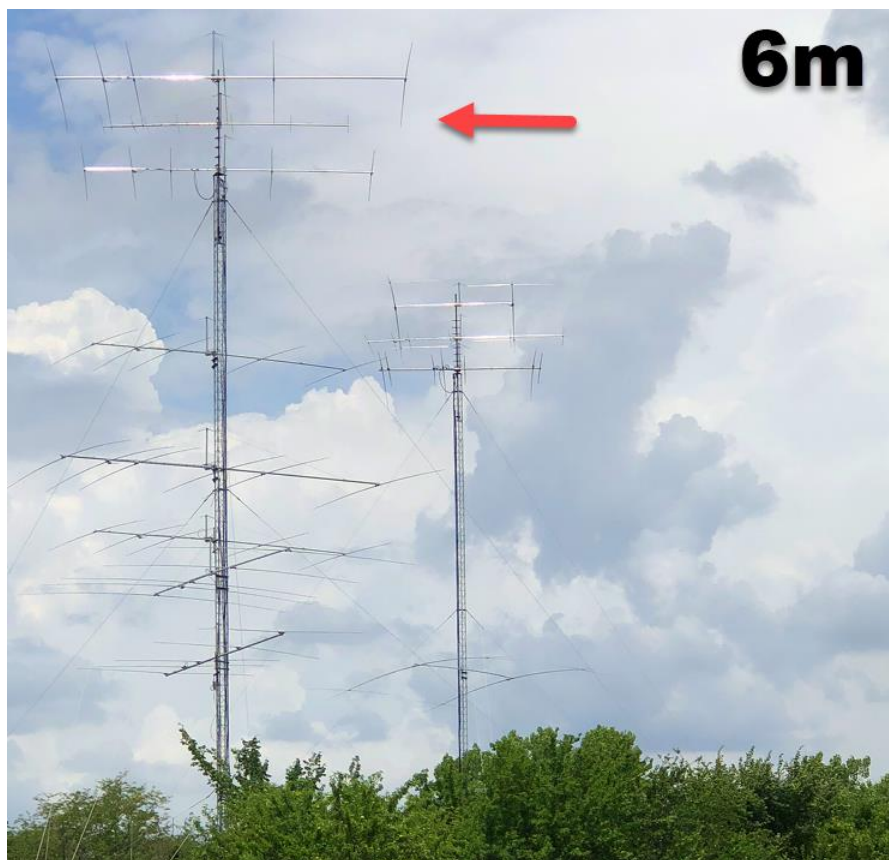
JK106 6-ele on 36' boom

- Top - rotating
- 1x - fixed EU (not mounted)

FT5ZM 3-ele - fixed on SA



6m  
2m  
440



M<sup>2</sup> 7-ele rotating  
From Fred NøXA



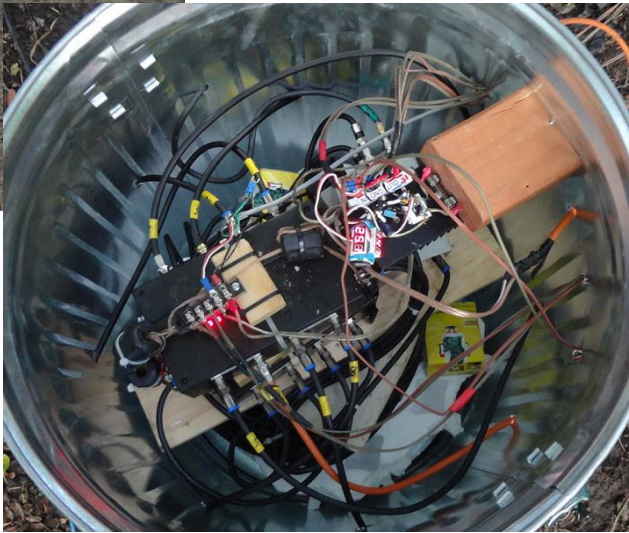
25' – Cushcraft 3/3 fixed North  
From Rob KE5BR





Beverage  
Skimmer vertical  
HiZ 8-circle multi-band

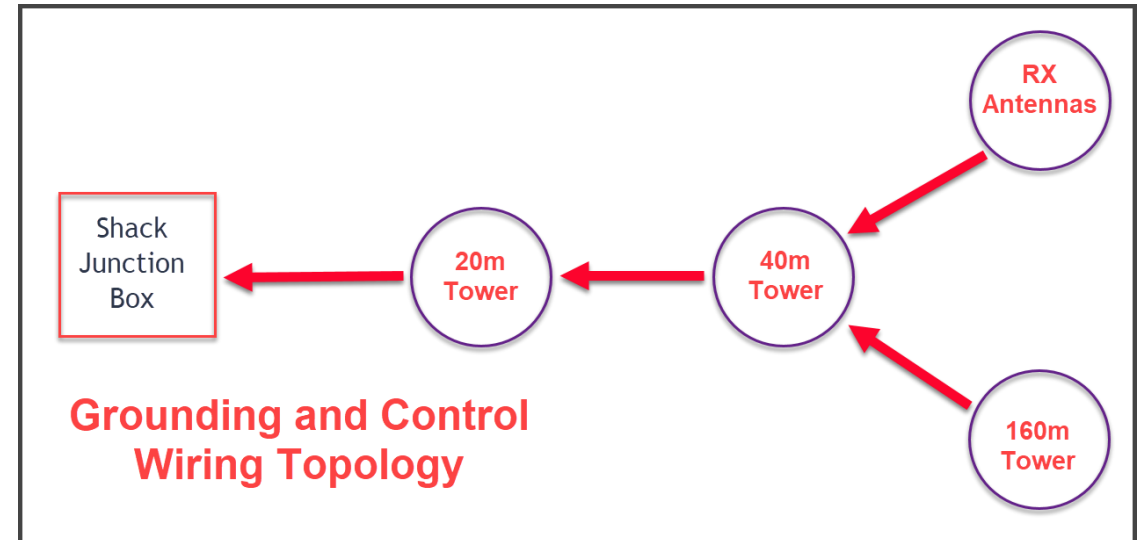
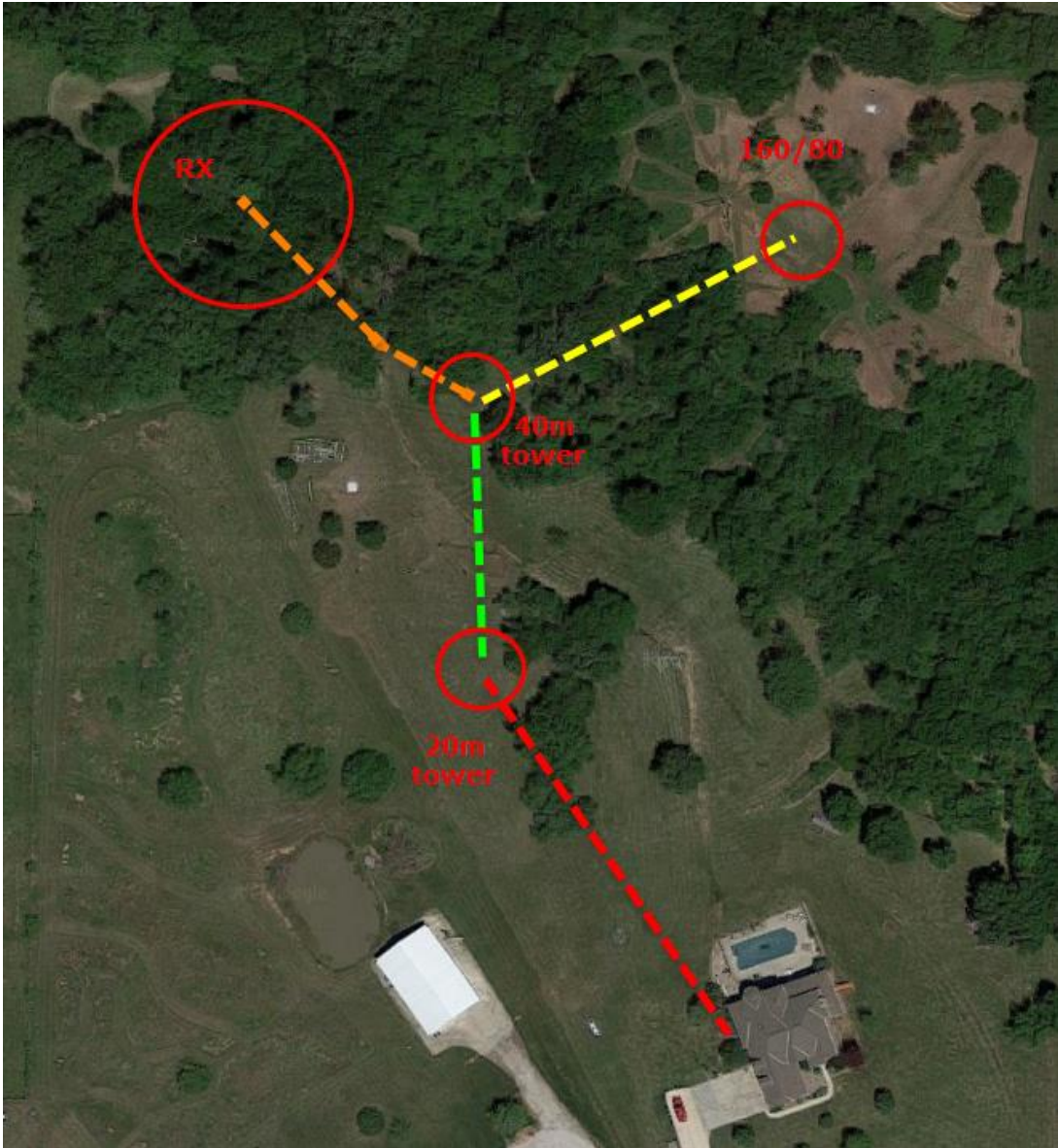
RX



# Agenda

- ▶ Site Overview
- ▶ Antennas by band
- ▶ **Grounding**



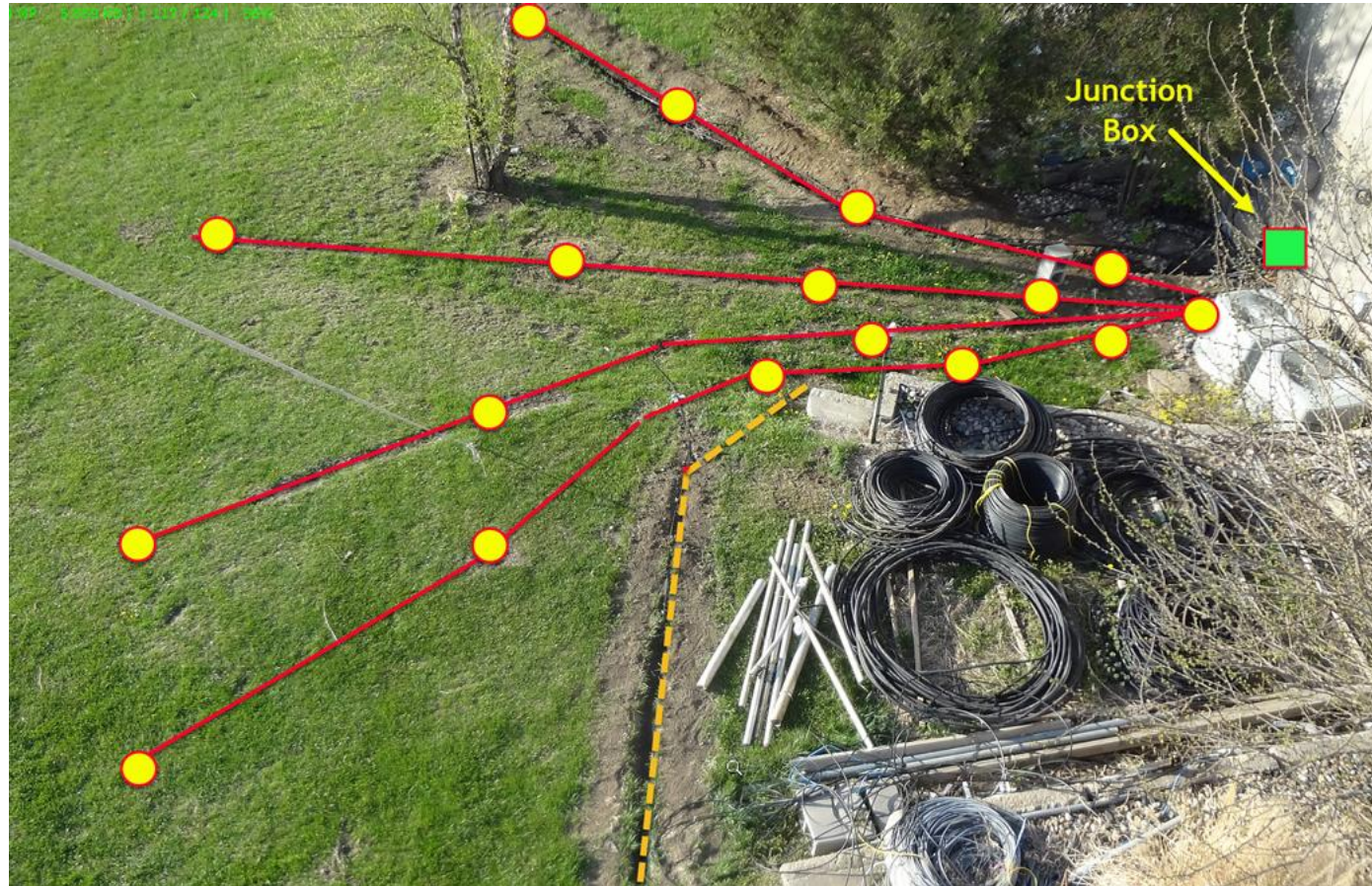


## 20m Tower – Ground Rod Layout





# Shack Entrance – Ground Rod Layout





## 20m Tower – Polyphaser Mount & 2x8 SW



## 20m Tower – Top of Tower



Brazed Rod Connections

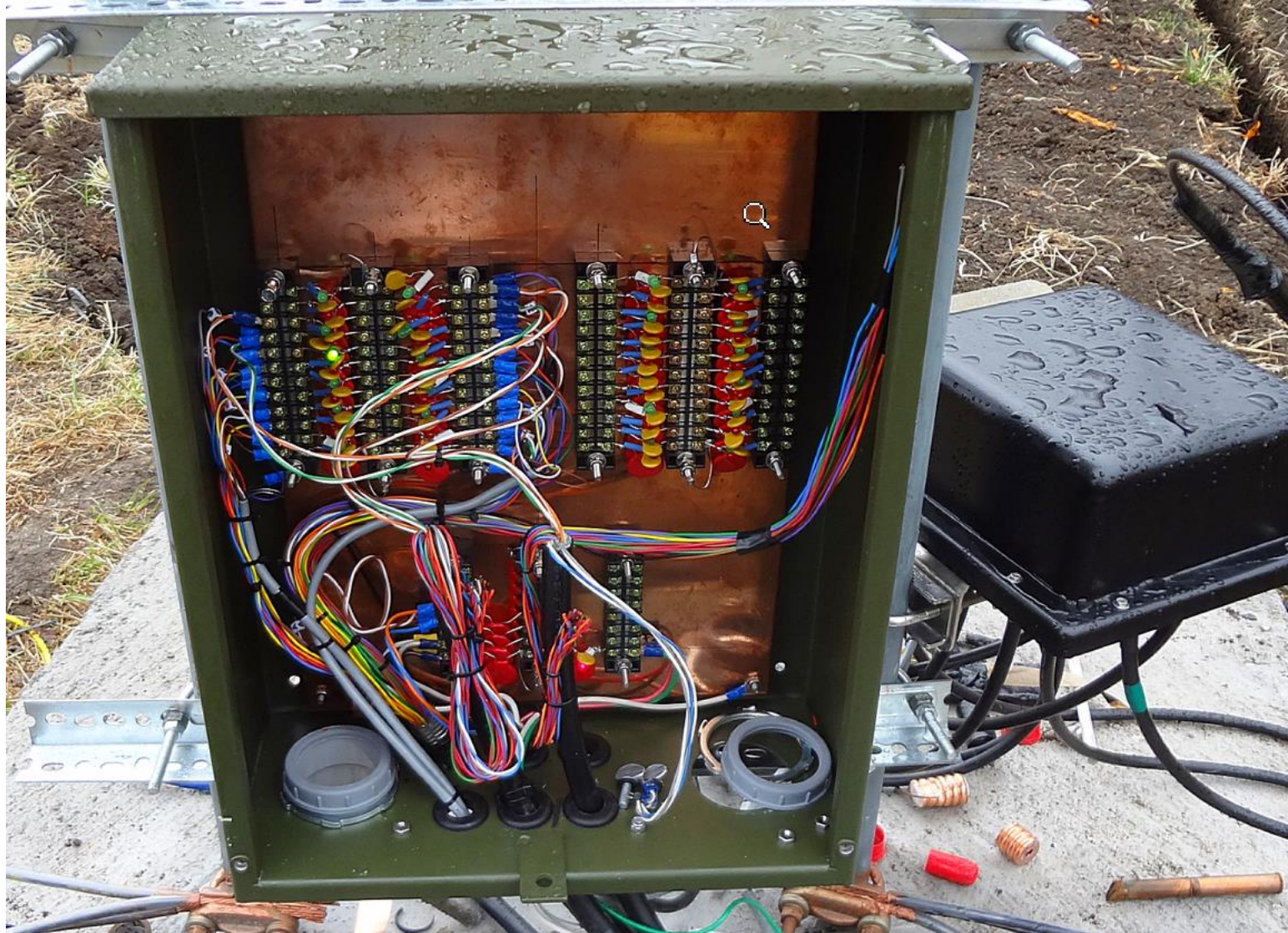


Tower Leg Clamp





# 40m Tower – Control Wire & MOV





More Info:  
[acøc.com](http://acøc.com)

